



# Rainfall events with shallow landslides in the Entella catchment, Liguria, northern Italy

Anna Roccati<sup>1</sup>, Francesco Faccini<sup>2</sup>, Fabio Luino<sup>1</sup>, Laura Turconi<sup>1</sup>, and Fausto Guzzetti<sup>3</sup>

<sup>1</sup>Istituto di Ricerca per la Protezione Idrogeologica, Consiglio Nazionale delle Ricerche, Turin branch office, Strada delle Cacce 73, 10135 Torino, Italy

<sup>2</sup>Dipartimento di Scienze della Terra, dell'Ambiente e della Vita, Università di Genova, Corso Europa 26, 16132 Genova, Italy

<sup>3</sup>Istituto di Ricerca per la Protezione Idrogeologica, Consiglio Nazionale delle Ricerche, Head office, Via Madonna Alta 126, 06128 Perugia, Italy

**Correspondence:** Anna Roccati (anna.rocatti@fastwebnet.it)

Received: 4 December 2017 – Discussion started: 2 January 2018

Revised: 20 August 2018 – Accepted: 27 August 2018 – Published: 13 September 2018

**Abstract.** In recent decades, the Entella River basin, in the Liguria Apennines, northern Italy, was hit by numerous intense rainfall events that triggered shallow landslides and earth flows, causing casualties and extensive damage. We analyzed landslide information obtained from different sources and rainfall data recorded in the period 2002–2016 by rain gauges scattered throughout the catchment, to identify the event rainfall duration,  $D$  (in h), and rainfall intensity,  $I$  (in  $\text{mm h}^{-1}$ ), that presumably caused the landslide events. Rainfall-induced landslides affected the whole catchment area, but were most frequent and abundant in the central part, where the three most severe events hit on 23–24 November 2002, 21–22 October 2013 and 10–11 November 2014. Examining the timing and location of the slope failures, we found that the rainfall-induced landslides occurred primarily at the same time or within 6 h from the maximum peak rainfall intensity, and at or near the geographical location where the rainfall intensity was largest. Failures involved mainly forested and natural surfaces, and secondarily cultivated and terraced slopes, with different levels of maintenance. Man-made structures frequently characterize the landslide source areas. Adopting a frequentist approach, we define the event rainfall intensity–event duration (ID) threshold for the possible initiation of shallow landslides and hyper-concentrated flows in the Entella River basin. The threshold is lower than most of the curves proposed in the literature for similar mountain catchments, local areas and single regions in Italy. The result suggests a high susceptibility to rainfall-induced shallow landslides of the Entella catchment due to

its high-relief topography, geological and geomorphological settings, meteorological and rainfall conditions, and human interference. Analysis of the antecedent rainfall conditions for different periods, from 3 to 15 days, revealed that the antecedent rainfall did not play a significant role in the initiation of landslides in the Entella catchment. We expect that our findings will be useful in regional to local landslides early warning systems, and for land planning aimed at reducing landslide risk in the study area.

## 1 Introduction

The study concerning the rainfall thresholds able to trigger shallow landslides is certainly one of the most studied aspects in the geomorphological field in the last decades. The idea of being able to predict the triggering of a mass movements as a function of recorded rainfall has greatly fascinated researchers all over the world. The study can be exhaustive only if the researcher has precise rainfall data and detailed information about the location, altitude and the time of the landslide trigger.

Many papers have been published on the sort of statistical analysis of the relationship between rainfall and the occurrence of mass movements (Campbell, 1975; Caine, 1980; Govi and Sorzana, 1980; Moser and Hohensinn, 1982/1983; Wieczorek and Sarmiento, 1983; Brand et al., 1984; Govi et al., 1985; Cannon and Ellen, 1985; Crozier, 1986; Wieczorek, 1987) since the beginning of the 1980s. And they con-

tinued with many other studies also in the following decade (Kim, 1991; Reid and Page, 1993; Ceriani et al., 1994; Premchitt et al., 1994; Crozier, 1997; Glade, 1997; Crosta, 1998).

Italy proves to be an excellent experimental field. Every year, in particular during the summer, there are thousands of shallow landslides due to short but heavy rainfall: they can cause serious social and economic damage (Wasowski, 1998; Alpert et al., 2002; D'Amato Avanzi et al., 2012; Luino, 2005; Giannecchini, 2006; Del Ventisette et al., 2012; Trigila et al., 2018).

Since 1970, the Liguria region (northern Italy), one of the Italian areas where landslide risk is the highest (Guzzetti, 2000; Salvati et al., 2010), has suffered from rainfall events characterized by flash floods, shallow landslides, large-scale complex landslides and earth flows along small creeks (Faccini et al., 2015c). Since the early 1990s, the Liguria region seems to have been suffering a sort of resurgence of these events, more and more characterized by short-duration and intense rainfall volumes that have triggered damaging landslides (Guzzetti et al., 2004; Faccini et al., 2005, 2015a, b, 2017; Giannecchini et al., 2010, 2015; Silvestro et al., 2012, 2016; Cevasco et al., 2015, 2017; D'Amato Avanzi et al., 2015), chiefly where urban planning and land management were poor or ineffective, resulting in an increased vulnerability to geohydrological (landslides and flood) hazards (Bartolini et al., 2014). Overall, since 1970 the rainfall-induced landslide events have claimed 16 lives and have caused widespread and extensive damage to private and public properties, structures and infrastructures, and business.

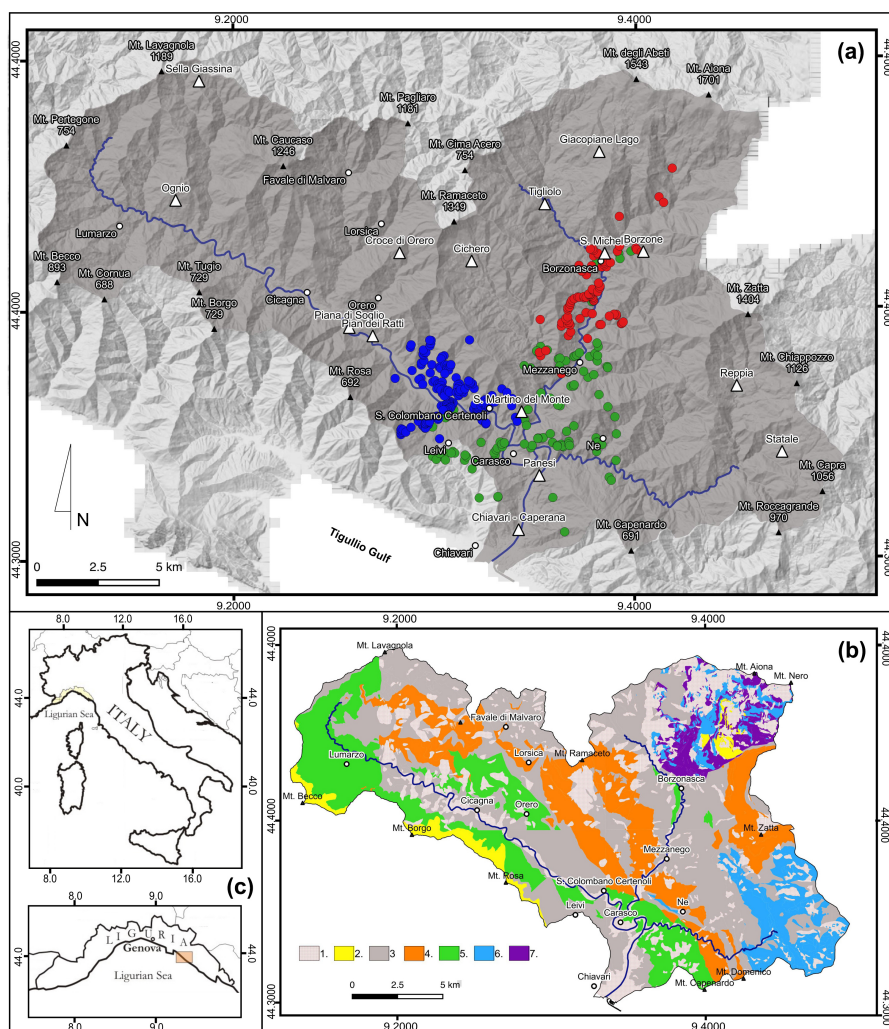
The knowledge of the amount of precipitation needed to trigger shallow landslides and earth flows is essential for the implementation of an operational landslide warning system (Aleotti, 2004; Baum and Godt, 2010; Tiranti and Rabuffetti, 2010; Martelloni et al., 2012; Mathew et al., 2014). Definition of rainfall thresholds is the key issue for the prediction of rainfall-induced landslides. In literature, various methods have been proposed to define the rainfall conditions that are likely to trigger slope failures. Physically based approaches depend on the understanding of the complex physical processes that control slope stability (Montgomery and Dietrich, 1994; Wilson and Wieczorek, 1995; Iverson, 2000; Crosta and Frattini, 2003; Segoni et al., 2009): they are elaborate to apply because of the difficulty in defining the exact spatial and temporal variation of the many factors involved, particularly in large regions (e.g., effects of vegetation, rainfall variation, mechanic and hydraulic properties of both bedrock and soils). Empirical approaches rely on the definition of empirical or statistical rainfall thresholds through the analysis of the rainfall conditions that in the past triggered landslides (Caine, 1980; Wieczorek, 1996; Aleotti, 2004; Guzzetti et al., 2008; Brunetti et al., 2010; Saito et al., 2010; Palladino et al., 2017; Peruccacci et al., 2017); they differ in rainfall data adopted (e.g., intensity and duration of precipitation, cumulative event rainfall, antecedent rainfall) and geographical extent of their validity (e.g., local, regional, national, global).

Here we discussed the rainfall events that have triggered shallow landslides in the Entella River basin, in eastern Liguria, in the 15-year period 2002–2016. During this period, the study area was one of the most frequently affected catchments, with a total of 29 damaging rainfall events and 94 known shallow landslides that have caused two fatalities. We use rainfall and landslide information of a subset of 17 events, for which location and timing of the failures are exactly known, to define the rainfall thresholds for the possible initiation of shallow landslides in the Entella catchment. In addition, we investigate the correlation between landslides and land cover and the possible role of the antecedent rainfall in slope failures.

The paper is organized as follows: (i) description of the general setting of the Entella catchment (Sect. 2); (ii) description of the sources and criteria used for the compilation of the catalogue of rainfall events that triggered shallow landslides and the method adopted to define the rainfall thresholds (Sect. 3); (iii) focus on the three largest and damaging rainfall events (23–24 November 2002, 21–22 October 2013 and 10–11 November 2014) that affected the study area (Sect. 4); (iv) rainfall thresholds for the possible initiation of shallow landslides in the Entella catchment and results of the rainfall and landslides analysis (Sect. 5); (v) discussion of our findings, including a comparison with similar, published curves and the correlation with the land-use and human interference (Sect. 6); and (vi) summary of the results of the study and its possible implementation in a landslide warning system and land planning (Sect. 7).

## 2 Study area

The Entella River basin extends for 375 km<sup>2</sup> in the Tyrrhenian sector of the Liguria Apennines, northwestern Italy (Fig. 1), and encompasses the Lavagna (160 km<sup>2</sup>), Sturla (130 km<sup>2</sup>) and Graveglia (63 km<sup>2</sup>) tributaries (Fig. 1a). In the area there are different rock types, Jurassic to Paleocene in age, arranged in a complex geological setting characterized by the presence of multiple sets of tectonic discontinuities (Geological Service of Italy, 1968; Liguria Region, 2005; Marini, 1992) (Fig. 1b). Shale, limestone, heterogeneous marl, slate and sandstone crop up in the Lavagna and lower Sturla valleys, whereas in the Graveglia valley there is an ophiolitic sequence, encompassing serpentine, gabbro, basalt, ophiolite breccia, chert, gray limestone and shale. In the upper part of the Sturla valley, along the Tyrrhenian–Adriatic divide, marly limestone, marl and other heterogeneous and chaotic rocks can be found. Pliocene and Quaternary deposits cover extensively the slopes and the valley floors. The morphology of the catchment is controlled by the geological and the structural settings. Except for narrow and mostly flat plains in the Lavagna, Graveglia and Sturla valleys, steep and very steep slopes characterize the catchment, some of which host large and deep-seated landslides.

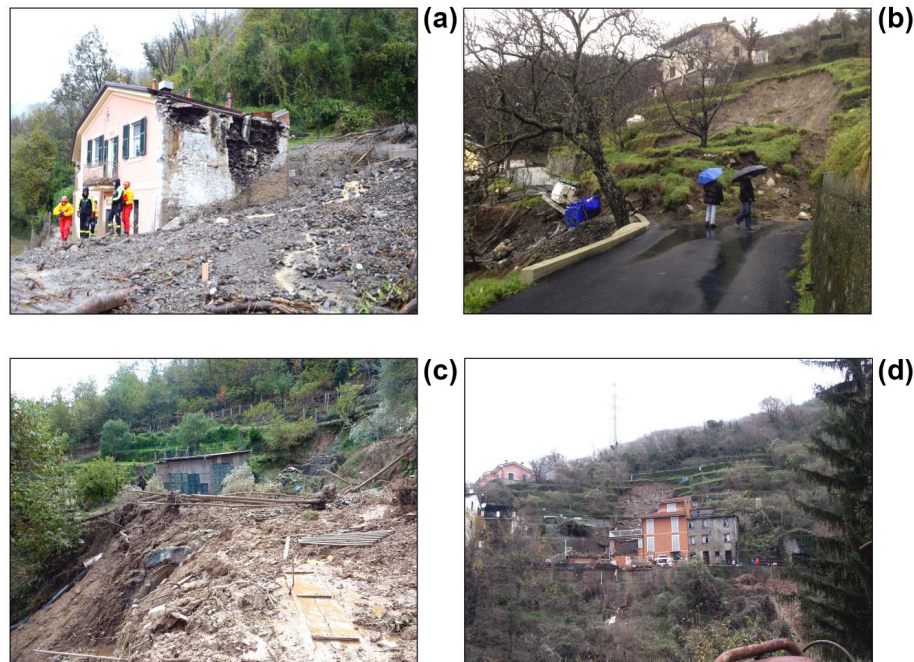


**Figure 1.** (a) Geography and morphology of the Entella River basin and the surrounding areas. White triangles show location of rain gauges. Dots show locations of shallow landslides for the 23–24 November 2002 (blue), the 21–22 October 2013 (red), and the 10–11 November 2014 (green) rainfall events. (b) Simplified geological map for the Entella River: 1 – quaternary deposit; 2 – marly limestone, calcareous or clayey marl; 3 – shale, shale with interlayered siltstone and limestone; 4 – sandstone; 5 – marl and silty marl; 6 – ophiolite; 7 – chaotic complex. (c) Location map.

Different types of landslides generally characterize the Entella catchment, with different states of activity, from active to dormant and stabilized: (i) shallow landslides, slow-moving and rapid to extremely rapid earth flows (Hungr et al., 2001), and rock falls on steep slopes (in particular along the roads), triggered by very short and intense rainfalls, as well as (ii) ancient slow large deep-seated gravitational slope deformations, particularly at the head of the valleys, reactivated during prolonged precipitation. Landslides are widely distributed and involve mainly debris cover from a few centimeters to 3–4 m thick, and portions of the fractured and weathered bedrock (Faccini et al., 2002, 2017; Cevasco et al., 2017). Slope failures affect areas from a few square meters to several square kilometers (deep-seated gravitational slope deformation) and involve volumes ranging from a few to

thousands of cubic meters. Forests cover more than 70 % and urban areas less than 3 % of the catchment, the latter chiefly along the main valley floors (Liguria Region, 2000). The remaining part is covered by olive groves, chestnut woods and fruit orchards on well-maintained or abandoned terraces, and by grassland and grazing land. Shrubs and outcropping rocks are common at high elevation.

The climate is mediterranean, modulated by the local morphological and orographic conditions. The presence of valleys oriented east to west (Lavagna and lower Graveglia valleys) and north-northeast to south-southwest (Sturla and upper Graveglia valleys) facilitates the channeling of air masses and meteorological disturbances pushed landward by southern marine winds. Mean annual precipitation (MAP) averages 1800 mm and ranges from 1130 mm near the basin



**Figure 2.** Example of shallow landslides triggered by intense rainfall in the Entella catchment in the 15-year period 2002–2016. **(a)** Leivi: view of an earth flow that destroyed a building, causing two casualties, on 10 November 2014. **(b)** Ne: view of a shallow landslide that occurred on 4 January 2014. **(c)** Mezzanego: damage to a road and private property caused by a shallow landslide on 22 October 2013. **(d)** San Colombano Certenoli: view of an earth flow that damaged a building on 24 November 2002. See Fig. 1 for location of the landslide sites.

outlet to more than 2300 mm in the upper Lavagna and Sturla valleys. Precipitation is most abundant from October to November, and in February. The Apennines range, locally exceeding 1700 m in elevation, runs parallel to the coast of the Ligurian Sea, and acts as a barrier for the low-pressure systems that characterized the Gulf of Genoa, primarily in the autumn and winter periods (Anagnostopoulou et al., 2006): these typical Mediterranean cyclones of orographic origin, called the “Genoa Low”, result in thunderstorms with intense and very intense rainfall that cause widespread and damaging ground effects, both on the slopes and along the drainage pattern, in the Ligurian and northern Tuscany regions (Brandolini et al., 2012; Sacchini et al., 2012; Silvestro et al., 2012, 2016).

### 3 Methods

To define the rainfall conditions that may trigger shallow landslides in our study area, we considered 29 rainfall events that occurred in the Entella catchment in the 15-year period 2002–2016 that have caused landslides (Table 1). All the events caused damage (Fig. 2), and one of them (10–11 November 2014) resulted in the loss of lives. For each event, we collected landslide and rainfall information. The landslide information included (i) the location and number of the event landslides, (ii) the time of occurrence of the slope

failures, and (iii) the consequences of the landslides (i.e., type of damage, casualties). We obtained the landslide information from different sources, including scientific papers, technical and event reports, damage reports and catalogues compiled by regional and local authorities, archives of local municipalities, newspaper articles, and interviews with local inhabitants. We obtained rainfall measurements from 15 rain gauges in the Entella catchment (Fig. 1, Table 2) (Ligurian Region, 2018). The rain gauges operated for different periods and show gaps in their records, including a gap common to all gauges in the period 1999–2001. For each rain gauge, we calculated the MAP for the entire measurement record.

Among the 29 rainfall events, we collected useful information for 16 events. Using this subset of landslide and rainfall information, we identified 34 rainfall conditions associated with known landslides for which the time and location of the slope failures were known with sufficient geographical and temporal accuracy (Table 3). For each rainfall condition, we estimated the cumulated event rainfall,  $E$  (in mm); the event rainfall duration,  $D$  (in h); the rainfall intensity,  $I$  (in  $\text{mm h}^{-1}$ ) for 1, 3, 6, 12 and 24 h periods; and the average rainfall intensity for the rainfall event,  $I$  ( $\text{mm h}^{-1}$ ) (Table 3). For this purpose, following Peruccacci et al. (2012), for each known landslide or cluster of landslides, we selected a representative rain gauge, considering (i) the geographic distance between the rain gauge and the landslide, or the ge-



**Table 1.** Rainfall events that have triggered – mostly shallow – landslides in the Entella River catchment in the 15-year period 2002–2016. In bold are the three events discussed in the paper. Sites: BR – Borzonasca; CG – Cicagna; CR – Carasco; CV – Chiavari; FM – Favale di Malvaro; LM – Lumarzo; LR – Lersica; LV – Leivi; MG – Mezzanego; NE – Ne; OR – Orero; SC – San Colombano Certenoli. See Fig. 1 for location of the sites. Abundance of landslides: S – single landslide; M – multiple landslides. Damaged element: B – building; I – infrastructure; R – road; S – structure; C – casualty.

ID	Date	Site	Abundance	Damage
<b>1</b>	<b>23–24 Nov 2002</b>	<b>BR, CV, NE, SC</b>	<b>M</b>	<b>C, S, I</b>
2	31 Oct–1 Nov 2003	BR, NE, SC	M	S, I
3	19–20 Feb 2006	BR	S	S, I
4	21–23 Nov 2007	MG	S	I
5	11–12 Nov 2008	BR, CR, NE	M	S, I
6	1 Dec 2008	CR	S	S, I
7	19–20 Jan 2009	NE	M	S, I
8	29–30 Nov 2009	NE	M	S, I
9	8 Dec 2009	CR	S	S, I
10	22–25 Dec 2009	BR, CR, MG, NE, OR	M	S, I
11	7–9 May 2010	NE, FM	M	S, I
12	31 Oct–2 Nov 2010	BR, MG, NE	M	S, I
13	23–24 Dec 2010	MG	M	S, I
14	8 Jun 2011	NE	M	S, I
15	4–5 Sep 2011	NE	M	S, I
16	25 Oct 2011	NE	M	S, I
17	5 Nov 2012	NE	S	S, I
18	8 Mar 2013	MG	M	S, I
<b>19</b>	<b>21–22 Oct 2013</b>	<b>BR, CR, LV, MG, NE, SC</b>	<b>M</b>	<b>C, S, I</b>
20	30 Oct 2013	CG, FM	M	S, I
21	8–9 Nov 2013	SC	S	S, I
22	26–27 Dec 2013	BR, LM, MG, NE	M	S, I
23	4 Jan 2014	BR, MG, NE, SC	M	S, I
24	16–20 Jan 2014	BR, CR, LM, MG, NE	M	S, I
25	10–11 Oct 2014	CG, LR, MG	M	S, I
26	3–6 Nov 2014	NE	M	S, I
<b>27</b>	<b>10–11 Nov 2014</b>	<b>BR, CR, LV, MG, NE, SC</b>	<b>M</b>	<b>C, S, I</b>
28	14 Sep 2015	BR, CR, FM, MG	M	S, I
29	9 Feb 2016	NE	M	S, I

ometric center of a cluster of landslides; (ii) the elevation of the rain gauge, compared to the elevation of the landslide(s); and (iii) the location of the rain gauge with respect to the geographical and morphological settings. For 82 % of the landslides, the representative rain gauge was the one closest to the landslide or the cluster of landslides. The rainfall duration ( $D$ , in h) was determined by measuring the period between the end-time of the rainfall event, set to coincide with the time of the landslide(s), and the start-time of the rainfall event, set to coincide with the time when the rain started in the rainfall record. For landslides for which the rainfall end-time was known accurately, the end-time coincides with the time of the last rainfall measurement in the hour when the slope failure occurred. For landslides for which only the date of occurrence is known, the rainfall end-time is taken to coincide with the time of the last rainfall measurement on the day when the slope failure occurred.

When the accurate identification of the rainfall start-time was problematic in the rainfall record, we considered a mini-

mum period without rain (“dry period”) to separate two subsequent rainfall events. To account for the seasonal variability, we considered a dry period of 12 h between April and September, and a dry period of 24 h between October and March. For each rainfall event, the corresponding event rainfall intensity ( $I$ , in  $\text{mm h}^{-1}$ ) was calculated by dividing the cumulated event rainfall in the period considered ( $E$ , in mm) by the length of the rainfall period ( $D$ , in h). For the rainfall events listed in Table 1 for which the date of occurrence of the landslides was unknown, the reconstruction of the rainfall event was not possible, and the events were not used to define the intensity–duration (ID) rainfall threshold.

To define the rainfall duration–rainfall intensity threshold, we adopted the statistical frequentist approach proposed by Brunetti et al. (2010). We plotted the 34-event rainfall duration–rainfall intensity ( $D$ ,  $I$ ) conditions that have resulted in shallow landslides and earth flows in the period 2002–2016, and we found the best fit to the cloud of empirical ( $D$ ,  $I$ ) data points, adopting a power law model.

**Table 2.** Rain gauges in the Entella River catchment used to analyze the rainfall conditions that have resulted in landslides in the catchment, in the 15-year period 2002–2016 (Fig. 1). Rainfall records are locally incomplete, and measurements are not available for all rain gauges in the period 1999–2001.

Rain gauge	Elevation	Period	Tributary
Chiavari Caperana	6	2002–2015	Entella
Panesi	25	1933–2015	Entella
Pian dei Ratti	70	2012–2015	Lavagna
Pian di Soglio	75	1936–2010	Lavagna
San Michele di Borzonasca	170	1924–2007	Sturla
Tigliolo	293	1924–2010	Sturla
San Martino del Monte	309	1919–2004	Lavagna
Borzone	386	2006–2015	Sturla
Ognio	490	2012–2015	Lavagna
Reppia	530	1972–2015	Graveglia
Statale	570	1934–2015	Graveglia
Sella Giassina	593	2012–2015	Lavagna
Cichero	615	2007–2015	Sturla
Croce di Orero	640	2012–2015	Lavagna
Giacopiane Lago	1030	1924–2015	Sturla

To avoid problems associated with the fitting of data spanning multiple orders of magnitude, we log-transformed the empirical data, and we fitted the distribution of rainfall conditions ( $\log(D)$ ,  $\log(I)$ ) that resulted in landslides with a linear equation,

$$\log(I) = \log(\alpha) - \beta \log(D), \quad (1)$$

which is entirely equivalent to the power law curve

$$I = \alpha D^{-\beta} \quad (2)$$

in linear coordinates commonly adopted to represent ID thresholds in the literature (Guzzetti et al., 2007, 2008), where  $I$  is the rainfall intensity ( $\text{mm h}^{-1}$ ),  $D$  is the duration of the rainfall event (h),  $\alpha$  is the intercept, and  $\beta$  defines the slope of the power law curve.

Next, for each event ( $D$ ,  $I$ ) we calculated the difference  $\delta(D)$  between the logarithm of the event intensity  $\log[I(D)]$  and the corresponding intensity value of the fit  $\log[I_f(D)]$ ,  $\delta(D) = \log[I(D)] - \text{fit } \log[I_f(D)]$ . Then we estimated the probability density of the distribution of  $\delta$  and model the distribution through least-square fitting using the Gaussian function:

$$G(\delta) = \frac{1}{\sqrt{2\pi}\sigma^2} \cdot \exp\left\{-\frac{[\delta - \mu]^2}{2\sigma^2}\right\}, \quad (3)$$

where  $\mu$  is the mean value, and  $\sigma$  is the standard deviation. Lastly, the threshold corresponding to the 5 % exceeding probability is defined, based on the fitted distribution of  $\delta(D)$ .

Peruccacci et al. (2012) argued that empirical rainfall thresholds for possible landslide occurrence are inherently affected by uncertainty, and that the uncertainty needs to be quantified. In an attempt to define the uncertainty associated with our threshold, we calculated the mean values  $\bar{\alpha}$  and  $\bar{\beta}$  and the associated uncertainty  $\Delta\alpha$  and  $\Delta\beta$  in terms of standard deviation of the  $\alpha$ ,  $\beta$  values obtained after sampling the  $D$ ,  $I$  conditions considered to define the threshold. First, out of the  $N(D, I)$  population, we selected a single ( $D$ ,  $I$ ) value, and we calculated the  $\alpha$  and  $\beta$  values using the remaining  $(N - 1)$  population of ( $D$ ,  $I$ ) value. When the selected ( $D$ ,  $I$ ) values were returned to the population  $N$ , a second ( $D$ ,  $I$ ) value was selected, and new  $\alpha$ ,  $\beta$  values were calculated. We repeated the procedure for all the  $n = 34$  ( $D$ ,  $I$ ) conditions and calculated the standard deviation of the  $\alpha$  and the  $\beta$  values.

We compare the obtained curve to similar ID empirical thresholds proposed in the literature for similar mountain catchments, local areas or single regions in Italy to investigate the influence of the local physiographical (e.g., meteorological, morphological, lithological, hydrological) and land cover setting on the rainfall thresholds.

To investigate the possible role of the antecedent rainfall conditions in the initiation of the rainfall-induced landslides in the Entella catchment, for each rainfall event in the 15-year period 2002–2016, we confronted the MAP-normalized cumulated event rainfall ( $E_{\text{MAP}}$ ), to the MAP-normalized antecedent rainfall ( $A_{(d)\text{MAP}}$ ) for four antecedent periods –  $A_{(3)\text{MAP}}$ ,  $A_{(5)\text{MAP}}$ ,  $A_{(15)\text{MAP}}$  and  $A_{(30)\text{MAP}}$  – for periods of 3, 5, 15, and 30 days before the rainfall events. Each rainfall record was normalized to the MAP of the same rain gauge used to define the  $D$ ,  $I$  rainfall conditions.

## 4 Rainfall events and shallow landslides

The most severe rainfall events, in terms of abundance of shallow landslides and extent of damage, that affected the Entella catchment in the considered period 2002–2016 are those that occurred on 23–24 November 2002, 21–22 October 2013 and 10–11 November 2014. In the next sections, they are briefly described to illustrate the peculiar meteorological conditions that caused intense and damaging precipitation in the Entella catchment, and the rainfall conditions and their ground effects.

### 4.1 The 23–24 November 2002 rainfall event

On 24 November 2002, a short and very intense rainfall event hit the medium-to-lower part of the Lavagna valley (Fig. 1). The convergence between a cold northern draft and wet Mediterranean currents generated a low-pressure system in the Tigullio Gulf that moved to the medium-to-lower Lavagna valley. The very intense rainstorm hit an area of about  $50 \text{ km}^2$  for a period of 1–2 h, before moving to

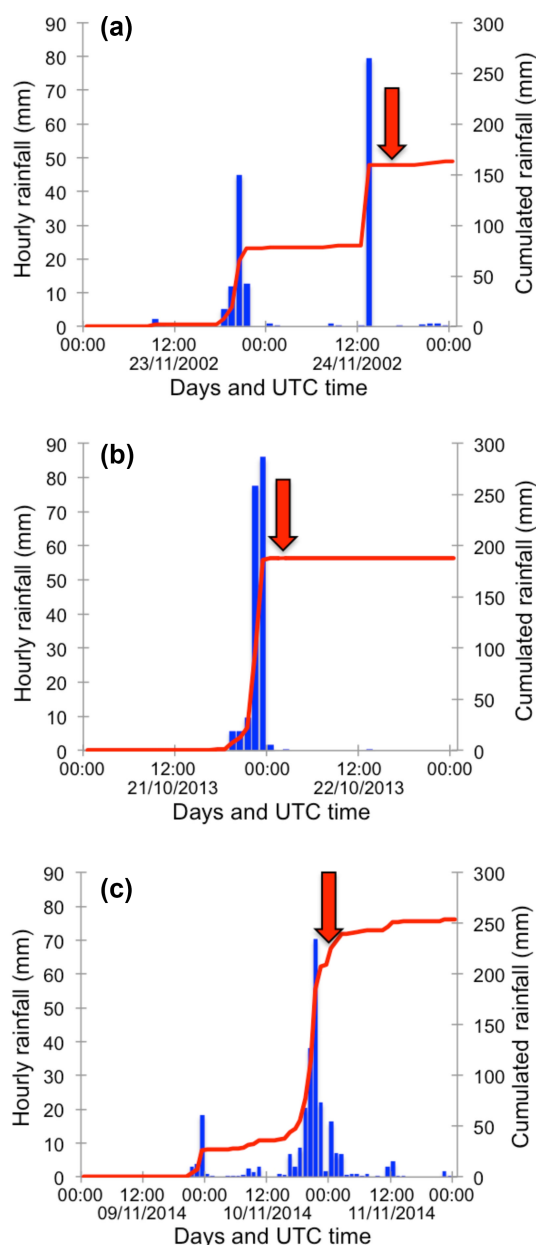
**Table 3.** Rainfall conditions used to define the rainfall threshold for the possible initiation of shallow landslides in the Entella catchment. Rain gauges (*R*): Bo – Borzone; Ci – Cichero; Cc – Chiavari Caperana; Cr – Croce di Orero; Gi – Giacopiane Lago; Md – Monte Domenico; Og – Ognio; Pa – Panesi; Ps – Piana di Soglio; Pr – Pian dei Ratti; Re – Reppia; Se – Sella Giassina; Sa – San Michele; Sm – San Martino del Monte; St – Statale; Ti – Tigliolo. See Fig. 1 for location of the rain gauges.  $E_{*h}$ , maximum cumulated rainfall recorded in the catchment, for different periods (mm). Rainfall measures that have resulted in landslides: *E* – cumulated rainfall event (mm); *D* – event rainfall duration (h); *I* – event rainfall intensity ( $\text{mm h}^{-1}$ ). Abundance of landslides (AL): *S* – single landslide; *M* – multiple landslides.

ID	Date	Maximum cumulated rainfall event					Event rainfall				AL
		$E_{1h}$	$E_{3h}$	$E_{6h}$	$E_{12h}$	$E_{24h}$	<i>E</i>	<i>D</i>	<i>I</i>	<i>R</i>	
1	24 Nov 2002	79.4 Sa	97.2 Ps	104.6 Ps	106.8 Ps	178.8 Ti	157.0	20	7.9	Sa	<i>M</i>
2	20 Feb 2006	19.0 Sa	37.6 Ci	47.0 Sa	85.6 Sa	92.8 Sa	128.4	58	2.2	Gi	<i>S</i>
3	12 Nov 2008	21.6 Ci	31.6 Re	53.0 Re	62.6 Bo	107.0 Bo	74.4	50	1.5	Pa	<i>S</i>
4	1 Dec 2008	20 Bo	49 Bo	77.8 Bo	97.4 Bo	81.8 Cr	63.5	95	0.7	Pa	<i>S</i>
5	8 Dec 2009	14.6 Re	33.0 Re	64.8 Re	94.2 Re	138.8 Bo	66.6	18	3.7	Pa	<i>S</i>
6	22 Dec 2009	13.8 Cr	34.6 Cr	61.8 Cr	76.6 Cr	105.4 Cr	50.8	28	1.8	Pa	<i>S</i>
7	22 Dec 2009	13.8 Cr	34.6 Cr	61.8 Cr	76.6 Cr	105.4 Cr	203.0	51	4.0	Cr	<i>S</i>
8	23 Dec 2009	25.2 Ci	49.2 Ci	78.0 Ci	101.0 Ci	120.2 Ci	157.0	47	3.3	Bo	<i>M</i>
9	9 May 2010	7.8 Ci	16.6 Cc	22.0 Cc	24.4 Cc	29.6 Cc	15.2	6	2.5	Cr	<i>S</i>
10	2 Nov 2010	40.8 Bo	54.0 Bo	84.0 Bo	132.2 Bo	180.0 Bo	228.2	64	3.6	Bo	<i>S</i>
11	22 Oct 2013	86.0 Bo	173.2 Bo	186.2 Bo	187.4 Bo	188.0 Bo	188.0	20	99.4	Bo	<i>M</i>
12	22 Oct 2013	86.0 Bo	173.2 Bo	186.2 Bo	187.4 Bo	188.0 Bo	55.6	20	2.8	Pr	<i>S</i>
13	30 Oct 2013	51.4 Pr	70.4 Pr	71.0 Pr	71.0 Pr	89.6 Cr	71.0	5	14.2	Pr	<i>S</i>
14	30 Oct 2013	51.4 Pr	70.4 Pr	71.0 Pr	71.0 Pr	89.6 Cr	27.4	4	6.9	Cr	<i>S</i>
15	26 Dec 2013	27.4 St	53.4 St	100.4 Ci	166.6 Ci	228.2 Og	188.0	28	6.7	Re	<i>M</i>
16	26 Dec 2013	27.4 St	53.4 St	100.4 Ci	166.6 Ci	228.2 Og	312.0	169	1.9	Og	<i>M</i>
17	26 Dec 2013	27.4 St	53.4 St	100.4 Ci	166.6 Ci	228.2 Og	172.2	24	7.2	Pr	<i>S</i>
18	2 Jan 2014	5.4 Cr	12.6 Cr	20.8 Cr	40.6 Cr	50.2 Cr	38.6	34	0.1	Gi	<i>S</i>
19	4 Jan 2014	15.6 Ci	36.4 Ci	64.4 Ci	110.2 Ci	117.2 Ci	152.6	74	2.1	Re	<i>S</i>
20	4 Jan 2014	15.6 Ci	36.4 Ci	64.4 Ci	110.2 Ci	117.2 Ci	127.6	72	1.8	Bo	<i>M</i>
21	17 Jan 2014	20.8 Ci	43.2 Cr	77.0 Pr	169.6 Ci	190.6 Ci	46.2	15	3.1	Pa	<i>S</i>
22	17 Jan 2014	20.8 Ci	43.2 Cr	77.0 Pr	169.6 Ci	190.6 Ci	117.8	21	5.6	Bo	<i>S</i>
23	17 Jan 2014	20.8 Ci	43.2 Cr	77.0 Pr	169.6 Ci	190.6 Ci	165.8	24	6.9	Og	<i>M</i>
24	10 Oct 2014	72.2 Se	161.8 Se	187.8 Se	215.4 Se	271.6 Se	157.8	21	7.5	Gi	<i>M</i>
25	11 Oct 2014	72.2 Se	161.8 Se	187.8 Se	215.4 Se	271.6 Se	90.8	5	18.2	Pr	<i>M</i>
26	11 Oct 2014	72.2 Se	161.8 Se	187.8 Se	215.4 Se	271.6 Se	109.6	4	27.4	Cr	<i>M</i>
27	10 Nov 2014	70.4 Pa	129.2 Pa	147.8 Pa	152.4 Pa	181.8 Pa	185.4	26	7.1	Pa	<i>M</i>
28	11 Nov 2014	70.4 Pa	130.6 Pa	169.4 Pa	202.4 Pa	213.8 Pa	238.0	37	6.4	Bo	<i>M</i>
29	11 Nov 2014	70.4 Pa	130.6 Pa	169.4 Pa	202.4 Pa	213.8 Pa	239.4	31	7.7	Pa	<i>M</i>
30	13 Nov 2014	70.4 Pa	130.6 Pa	169.4 Pa	202.4 Pa	215.6 Pa	280.0	81	3.5	Pa	<i>M</i>
31	13 Sep 2015	36.2 Pr	58.0 Og	58.2 Og	76.8 St	78.6 St	61.2	13	4.7	Pa	<i>S</i>
32	14 Sep 2015	109.8 Cr	159.2 Cr	169.2 Cr	188.2 Cr	236.6 Cr	180.4	21	8.6	Gi	<i>S</i>
33	14 Sep 2015	109.8 Cr	159.2 Cr	169.2 Cr	188.2 Cr	236.6 Cr	182.6	16	11.4	Pr	<i>S</i>
34	14 Sep 2015	109.8 Cr	159.2 Cr	169.2 Cr	188.2 Cr	236.6 Cr	236.6	21	11.3	Cr	<i>S</i>

wards the north-northeast. The event started in the afternoon on 23 November and continued into the late morning on 24 November, with a second and more intense rainfall burst. Maximum cumulated rainfall values were measured (i) at the San Martino del Monte rain gauge, the closest to the geometric center of clusters of event-triggered landslides, that recorded 79.4 mm of rain in 1 h, and (ii) at the Piana di Soglio rain gauge, that recorded 97.2 mm in 3 h and 104.6 mm in 6 h. The cumulated rainfall for the event exceeded 157.0 mm (Fig. 3a). The 1 h maximum intensity reached 93.0 mm between 12:00 and 13:00 UTC at the Chiavari rain gauge, with the most intense rainfall measured be-

tween 09:00 and 13:00 UTC on 24 November, corresponding to the most intense phase of the event.

Figure 4a portrays the cumulated event rainfall between 08:00 and 14:00 UTC on 24 November 2002, and shows that the maximum rainfall occurred along a north-northeast to south-southwest trending line, from the medium-to-lower Lavagna valley (Piana di Soglio, 104.6 mm) to the upper part of the Sturla valley (Tigliolo, 124.8 mm). The rainfall field decreased gradually towards the southeast (San Martino del Monte, 80.0 mm; San Michele, 76.0 mm) and towards the northwest, with a minimum value in the upper part of the Lavagna valley (Neirone, 14 mm).



**Figure 3.** Hourly rainfall (blue bars) and cumulated event rainfall (red line) for the three rainfall events considered in the Entella catchment (Table 1). (a) 23–24 November 2002 rainfall event measured at the San Martino del Monte rain gauge. (b) 21–22 October 2013 rainfall event measured at the Borzone rain gauge. (c) 9–11 November 2014 rainfall event measured at the Panesi rain gauge. See Fig. 1 for location of the rain gauges.

The rainfall event triggered numerous shallow landslides and earth flows, which caused serious damage chiefly to the road network (Faccini et al., 2005). Based on evidences provided by local inhabitants, landslides occurred in the 30 min period between 14:00 and 14:30 LT (13:00–13:30 UTC), following the most intense phase of the rainfall event, and

within 1 to 4 h from the hourly maximum peak rainfall intensity recorded by the San Martino del Monte rain gauge in the 48 h period between 00:00 UTC on 23 November and 00:00 UTC on 25 November.

#### 4.2 The 21–22 October 2013 rainfall event

On 21–22 October 2013, heavy rainfall hit the medium-to-lower part of the Sturla valley, and marginally the lower Lavagna valley and the town of Chiavari (Fig. 1). The convergence between the cold northern air flow and wet currents from the south generated several storm cells that were channeled from the Ligurian Sea in front of Chiavari to the inland valleys, in particular in the Sturla valley (ARPAL-CMIRL, 2013). A very intense and persistent rainstorm stood over a very small area for a period of 1 to 2 h, favored by the orientation of the valley and the local “barrier effect” of the Apennines range.

The rainfall event started on the evening of 21 October and ended on the morning of 22 October 2013. The maximum cumulated rainfall was measured by the Borzone rain gauge – located 1 km N of the area where event landslides were most abundant – which recorded 86.0 mm in 1 h and 173.2 mm in 3 h, and a cumulated rainfall for the 2-day period that exceeded 188.0 mm (Fig. 3b). At this rain gauge, the 1 h maximum intensity reached 86.6 mm between 21:00 and 22:00 UTC. The most intense phase of the event took place between 21:00 and 23:00 UTC on 21 October, and coincided with the maximum peak of the rainfall intensity.

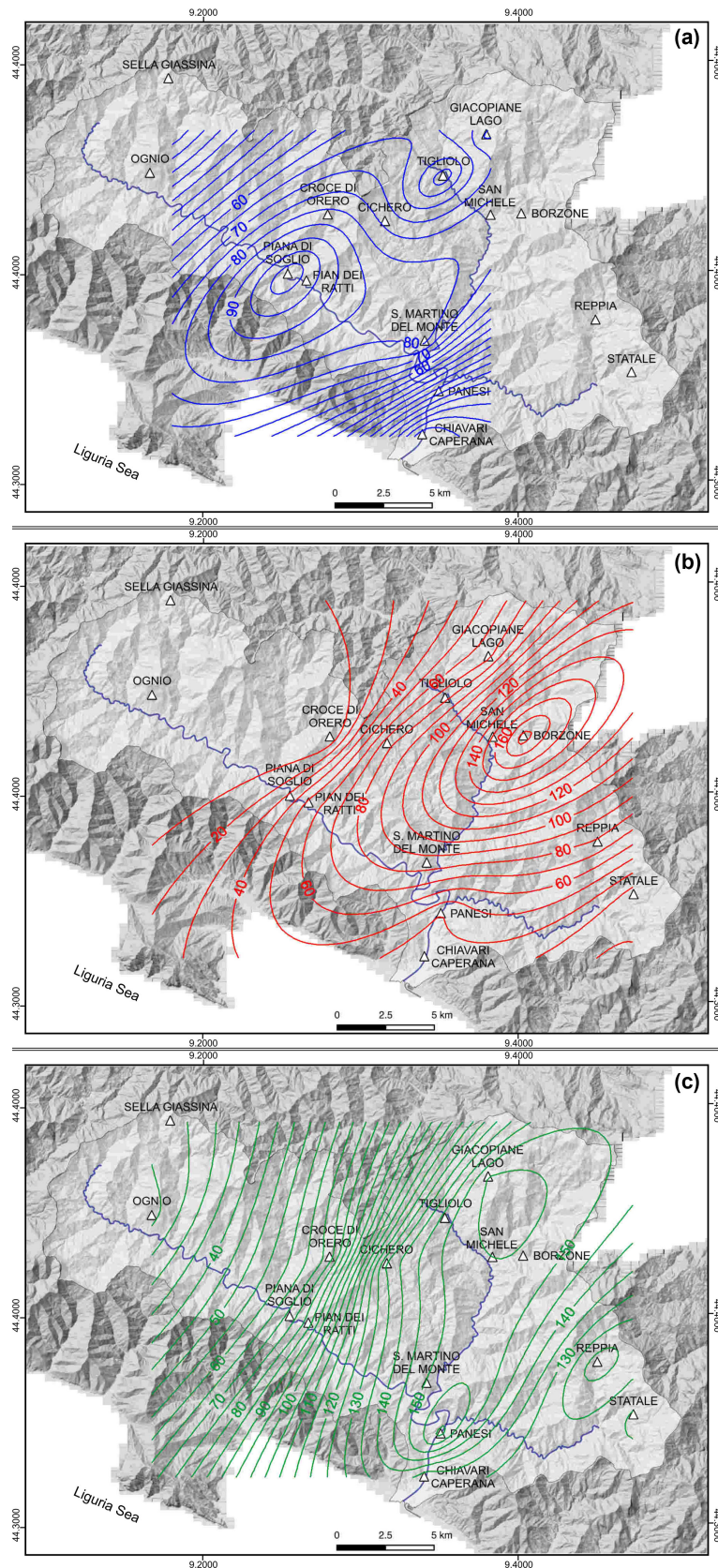
Figure 4b shows the cumulated event rainfall between 18:00 and 24:00 UTC on 21 October 2013. The rainfall field exhibits a northeast-to-southwest trend that coincides with the direction of the medium-to-lower part of the Sturla valley. The maximum cumulated rainfall was recorded along the valley (Borzone, 185.2 mm), with the rainfall totals decreasing gradually towards the main watershed (Giacopiane, 67.0 mm) and the lateral valleys (Cichero, 76.6 mm), up to minimum values at the outlet of the Sturla basin (Panesi, 36.2 mm).

The heavy rainfall event triggered widespread shallow landslides, which caused serious damage to structures and infrastructures (Faccini et al., 2017). Eyewitness evidence provided by local residents confirmed that the shallow landslides occurred in the 30 min period between 23:00 and 23:30 LT (00:00 and 00:30 UTC), shortly after the most intense phase of the rainfall event, and within 2 to 3 h from the hourly maximum peak intensity recorded by the Borzone rain gauge in the 24 h period between 12:00 UTC on 21 October and 12:00 UTC on 22 October 2013.

#### 4.3 The 10–11 November 2014 rainfall event

On 10 November 2014, a very short, intense rainfall hit the town of Chiavari and the inland areas between the lower Lavagna valley and the medium-to-lower Sturla val-





**Figure 4.** Spatial distribution of the cumulated event rainfall (mm) for the three rainfall events considered in the Entella catchment (Table 1). White triangles show location of the rain gauges used to prepare the maps, also shown in Fig. 1. Colored contour lines show cumulated rainfall event. (a) 23–24 November 2002. (b) 21–22 October 2013. (c) 9–11 November 2014.

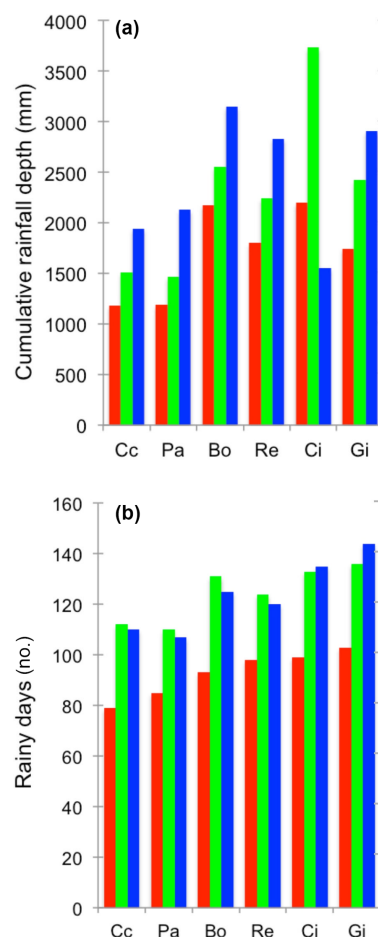
ley (Fig. 1). The heavy rainfall was caused by the convergence of humid air masses coming from SE and colder northerly currents over the Tigullio Gulf (ARPAL-CMIRL, 2015). Favored by the local orography, the convective system remained for several hours on the area, producing intense and persistent precipitation. The event began with a light rainfall on the evening of 9 November and ended on 11 November. The maximum cumulated rainfall was recorded by the Panesi rain gauge, located about 2 km east from the center of the cluster of the event landslides, with 70.4 mm in 1 h, 130.6 mm in 3 h, 169.4 mm in 6 h and a cumulated rainfall in the 3-day period that exceeded 250.0 mm (Fig. 3c). At the Panesi rain gauge, the 1 h maximum intensity reached 66 mm between 20:00 and 21:00 UTC. The most intense phase occurred between 17:00 and 23:00 UTC on 10 November, with a maximum intensity peak between 21:00 and 22:00 UTC.

Figure 4c portrays the cumulated event rainfall between 18:00 and 24:00 UTC on 10 November 2014, and shows that the maximum rainfall occurred along a north-to-south trending line, from the mouth of Entella River (Panesi, 183.2 mm) to the medium-to-lower Sturla valley (Borzone, 154.2 mm). Large cumulated rainfall amounts also characterize the lateral valleys (Cichero, 135.8 mm), and the upper Graveglia valley (Statale, 130.6 mm), whereas rainfall totals decrease towards the west, to the medium (Pian dei Ratti, 82.4 mm) and upper (Ognio, 18.4 mm) Lavagna valley.

The heavy rainfall produced widespread shallow landslides and earth flows, which caused serious damage to structures and infrastructures, and two casualties (Cevasco et al., 2017; Faccini et al., 2015a). Based on eyewitness evidences provided by local inhabitants, and on information obtained from newspaper articles, shallow landslides occurred in the 1 h period between 20:00 and 21:00 LT (21:00 and 22:00 UTC), during the most intense phase of the rainfall event, and within 1 h from the hourly maximum peak rainfall intensity recorded by the Panesi rain gauge in the 96 h period between 00:00 UTC on 9 November, and 00:00 UTC on 13 November.

## 5 Results

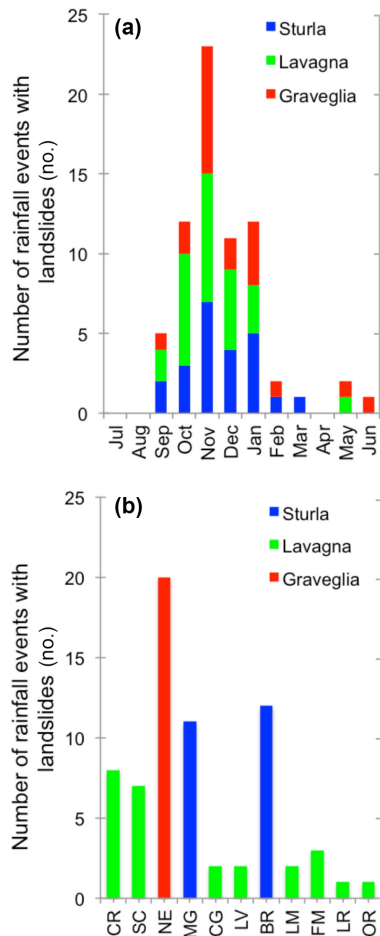
In the 15-year period 2002–2016, the analysis of the 16 events for which spatial and temporal failure information are known with sufficient accuracy revealed that rainfall that has resulted in shallow landslides that exceeded 70 mm in 1 h in five cases (26.3 %), 100 mm in 3 h in five cases (26.3 %), and 200 mm in 24 h in four cases (21.0 %) (Table 3). The rainfall events affected limited sectors of the Entella catchment, where they triggered 94 known landslides. We note that the five rainfall events with the largest hourly cumulated rainfall exceeding 70 mm (23–24 November 2002, 21–22 October 2013, 10–11 October 2014, 10–11 November 2014 and 14–15 September 2015; Fig. 1) were responsible for a large number of event landslides (tens to



**Figure 5.** Comparison of (a) the total (cumulated) rainfall, and (b) the mean number of rainy days, in the 15-year period 2002–2016 (blue), in 2013 (red) and in 2014 (green), at selected rain gauges in the Entella catchment. Rain gauges: Cc – Chiavari; Gi – Giacopiane Lago; Re – Reppia, Pa – Panesi; Ci – Cichero, Bo – Borzone. See Fig. 1 for the location of the rain gauges.

several tens of landslides). These events also caused severe damage to structures and infrastructures, and two casualties. With the exception of the 10–11 November 2014 rainfall event, the three events characterized by 24 h cumulated rainfall exceeding 200 mm (26 December 2013, 10–11 October 2014, 14 September 2015; Table 1) result in less abundant landslides and less severe damage than we expected.

Visual inspection of Fig. 5 reveals that 2013 and 2014 accounted for a larger number of rainfall events, when compared to the entire period considered, with higher values of the cumulated annual rainfall and of the number of rainy days. In the entire period considered, rainfall events with landslides occurred primarily from September to December (Fig. 6a). This is in agreement with results obtained at the national (Guzzetti, 2000) and regional (Giannecchini, 2006) scales in Italy.



**Figure 6.** (a) Seasonal and (b) geographical distribution of rainfall events with landslides in the 15-year period 2002–2016 in the Lavagna, Graveglia and Sturla tributary valleys of the Entella catchment. Landslide sites: BR – Borzonasca; CG – Cicagna; CR – Carasco; FM – Favale di Malvaro; LM – Lumarzo; LR – Lorsica; LV – Leivi; MG – Mezzanego; NE – Ne; OR – Orero; SC – San Colombano Certenoli. See Fig. 1 for location of the landslide sites.

The landslide events occurred in all the three tributaries of the Entella catchment but were most frequent and abundant between the medium-to-lower Sturla valley and the lower Lavagna valley (Fig. 6b, Table 4), where the most severe and damaging events occurred on 23–24 November 2002, 21–22 October 2013 and 10–11 November 2014. The events caused shallow landslides, primarily soil slips (Crosta et al., 2003) and slow-moving and rapid to extremely rapid earth flows (Hungr et al., 2001, 2014). The slope failures chiefly involved colluvial deposits of variable thickness, up to 4 m (CNR IRPI, 2015), and the superficial layers of the highly weathered clayey bedrock. Large volumes of water mixed with mud, debris and vegetation were mobilized along the slopes and the thalwegs. Landslides occurred mainly on steep and very steep slopes, in the range of acclivity from 36 % to 50 % (26) and from 51 % to 75 % (44), and in vegetated ar-

eas, both natural (62) and cultivated (19). Only 13 landslides involved urban areas; however, roads, trails, embankments, buildings, trenches and other man-made structures are often present in the source area of the failures (Fig. 2). In particular, shallow landslides developed mainly within forests and woodlands (48), followed by olive groves (9), transitional woodland/shrub vegetation (10) and agricultural lands (10) (Table 5). A number of failures (15) affected terraced slopes, mainly planted with olive groves (11), both those that are still cultivated and those that are abandoned.

Analysis of the rainfall conditions that have resulted in shallow landslides in the Entella catchment between 2002 and 2016 allowed a new event ID empirical rainfall threshold (Fig. 7) to be defined for the possible initiation of shallow landslides (Guzzetti et al., 2007, 2008) in the catchment. The black line in Fig. 7a represents the best-fit line  $T_{50}$ :

$$I = 31.88D^{-0.60}. \quad (4)$$

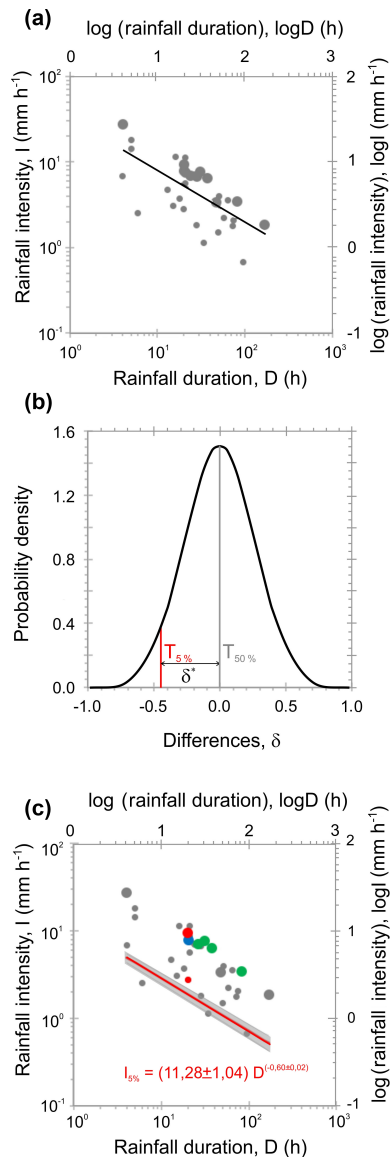
The black line in Fig. 7b represents the Gaussian model of the empirical distribution of the  $\delta$  values around the central value,  $\mu = 0$ , measured by the standard deviation,  $\sigma = 0.26$ . The red curve in Fig. 7c is the 5 % ID threshold ( $T_5$ ) for the study area:

$$I = (11.28 \pm 1.04)D^{(-0.60 \pm 0.02)}, \quad (5)$$

where  $\Delta\alpha = 1.04$  and  $\Delta\gamma = 0.02$  are the standard deviation of the  $\alpha$  and  $\gamma$  values and the gray pattern shows a proxy for the uncertainty associated with the threshold, in the range  $4\text{ h} < D < 170\text{ h}$ . The  $T_5$  threshold in Eq. (5) should leave 5 % of the  $(D, I)$  empirical points below the power law curve; in Fig. 7c, two points (5.9 %) are below the curve, approaching the number of data points expected below the threshold line. We note that the rainfall conditions that have resulted in landslides in the three severe events analyzed in this work i.e., the 10–11 November 2014, the 21–22 October 2013 and the 23–24 November 2002 events, all plot above the established ID threshold curve. The red vertical line represents the 5 % threshold ( $T_5$ ), the gray vertical line portrays the mean of the distribution, corresponding to the 50 % threshold ( $T_{50}$ ), and the distance  $\delta^*$  between the red and the gray lines is used to calculate the intercept of the 5 % threshold curve. The 5 % threshold,  $T_5$ , is the curve parallel to the best-fit line  $T_{50}$ , with intercept  $\alpha_5 = \alpha_{50} - \delta^*$  and slope  $\beta = 0.60$ . Assuming the available set of rainfall events is sufficiently complete and representative for the study area, we can state that the probability of experiencing landslides triggered by rainfall below the obtained threshold is less than 5 %. Rainfall events that have resulted in slope failures in the Entella catchment considered for the determination of the thresholds are in the range of rainfall duration  $4\text{ h} < D < 169\text{ h}$  and in the range of mean intensity  $0.5\text{ mm h}^{-1} < I < 4.9\text{ mm h}^{-1}$ .

As regards the possible role of the antecedent rainfall conditions in the initiation of rainfall-induced landslides in the





**Figure 7.** (a) Rainfall conditions ( $D$ ,  $I$ ) (dots) that have resulted in shallow landslides and earth flows in the Entella River basin, in the 15-year period 2002–2016 (Table 1). The black line represents the power law best-fit curve to the empirical rainfall ( $D$ ,  $I$ ) conditions. Small dots show single landslides and large dots show multiple landslides. (b) Graphic representation of the threshold corresponding to the 5 % exceedance probability for the distribution of the empirical data points ( $D$ ,  $I$ ). Black line is the Gaussian model fit of the difference, for the distribution of the empirical data points ( $D$ ,  $I$ ). Gray vertical line corresponds to the 50 % threshold (mean value). Red vertical line corresponds to the 5 % threshold. (c) Red line represents the 5 % rainfall threshold for the Entella catchment. Colored dots show rainfall conditions for the 10–11 November 2014 rainfall event (green), the 21–22 October 2013 rainfall event (red), and the 23–24 November 2002 rainfall event (blue). Small dots show single landslides and large dots show multiple landslides. The surrounding gray area shows uncertainty of the threshold.

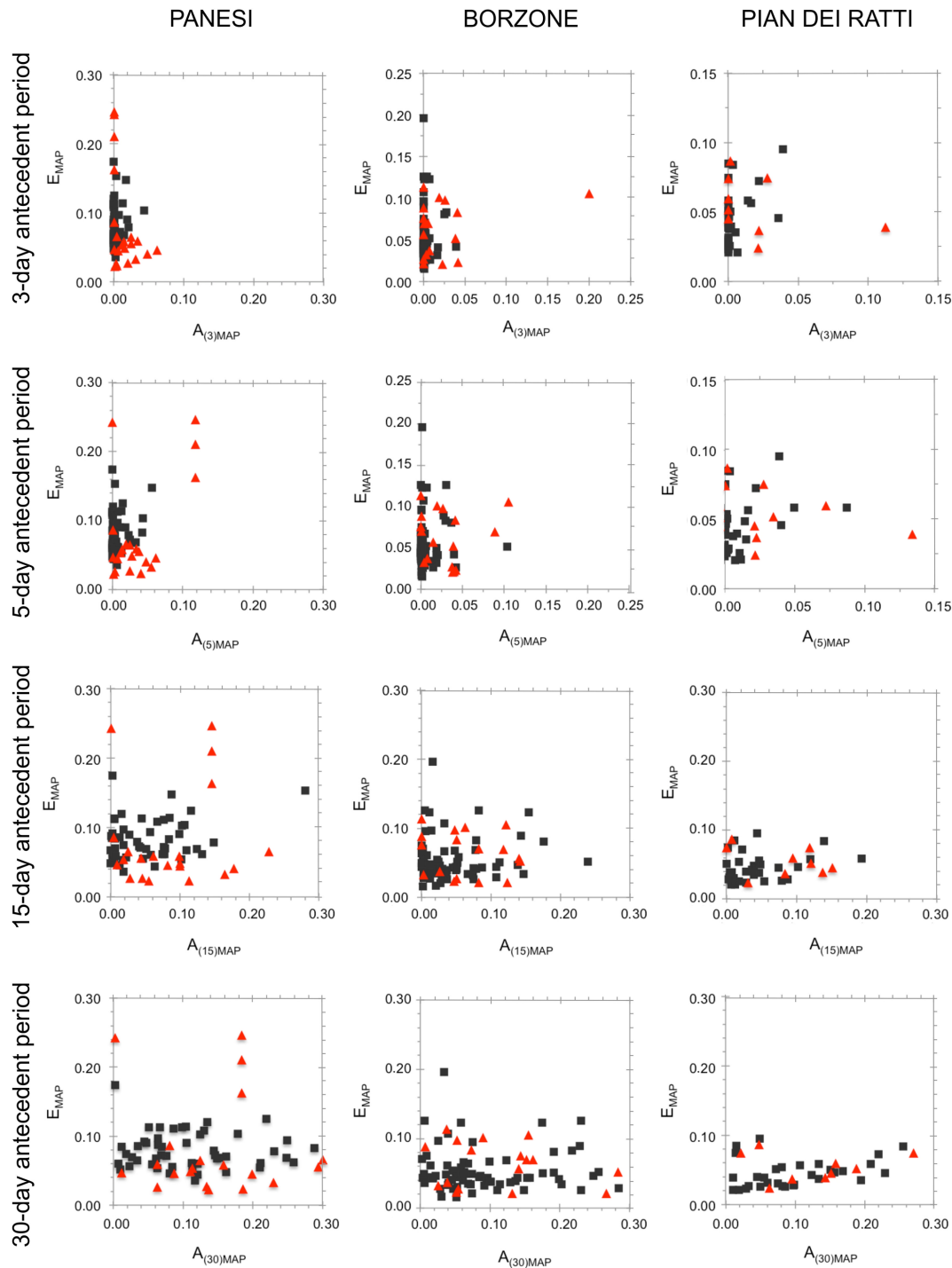
Entella catchment, we highlight the results of the relationship between the MAP-normalized cumulated event rainfall and the MAP-normalized antecedent rainfall for the different periods for the Panesi, Borzone and Pian dei Ratti rain gauges, i.e., the rain gauges nearest to the central portion of the Entella catchment where the considered rainfall events that have resulted in more abundant, widespread and damaging landslides have occurred. Inspection of Fig. 8 reveals that the scattering of the empirical data is very high, and the cumulated rainfall event and the antecedent rainfall for the different periods that have resulted (red triangles) and have not resulted in landslides, or for which the occurrence of landslides is unknown (black squares), cannot be separated. Significant correlation between the cumulated rainfall event and the antecedent rainfall does not exist, based on the results of a Pearson correlation test (Table 6).

## 6 Discussion

Intense and very intense geographically limited rainfall events generated by local convective thunderstorms, including the 10–11 November 2004, the 21–22 October 2013 and the 23–24 November 2002 rainfall events (Fig. 6, Table 1), have repeatedly affected the Entella catchment, triggering shallow landslides, slow-moving and rapid to extremely rapid earth flows. We found that very high intensity rainfall events with cumulated rainfall exceeding 50 mm per hour are frequent in the area, including 93.0 mm in 1 h recorded by the Chiavari rain gauge on 24 November 2002, 86.6 mm in 1 h recorded by the Borzone rain gauge on 22 October 2013 and 66.0 mm in 1 h recorded by the Panesi gauge on 10 November 2014. An analysis of the available rainfall records between 2002 and 2016 revealed that hourly cumulated rainfall exceeding 50 mm was recorded 42 times in the 15-year investigation period. In the records, very intense rainfall brought by local convective thunderstorms occurred chiefly in the autumn and winter and were favored by the motion of air masses from the Ligurian Sea, where warm and moist air from the south and cold air from the north collide, generating convective systems, and by the orographic setting of the Apennines that form a barrier for the convective cells moving inland from the Ligurian Sea (Fig. 1).

Analysis of three particularly severe rainfall events in the Entella catchment between 2002 and 2016 (Table 1) revealed that the rainfall-induced landslides triggered by the intense or very intense rainfall occurred primarily (i) at the same time, or in a period from 1 to 6 h from the maximum recorded peak rainfall intensity, and (ii) at or near the geographical location where the measured rainfall intensity was highest. Shallow landslides and earth flows initiated chiefly from steep and very steep slopes, primarily in forested and natural areas, and secondarily on cultivated and terraced slopes with different level of maintenance. Natural vegetated surfaces represent the preferential regions where landslides and erosive





**Figure 8.** Relationship between the MAP-normalized cumulative event rainfall  $E_{\text{MAP}}$ , and the MAP-normalized antecedent rainfall  $A_{(d)\text{MAP}}$ , for 3-, 5-, 15- and 30-day antecedent periods, for the Panesi, Borzone and Pian dei Ratti rain gauges. See Fig. 1 for location of the rain gauges. Red triangles show rainfall events with shallow landslides or earth flow (Table 1), and black squares show rainfall events that did not trigger landslides or for which the occurrence of landslides is unknown.

processes induced by rainfall easily occur. Generally, agricultural terraced surfaces contribute to maintaining the slope stability and the regulation of the rainfall runoff as long as the entire terrace system is well-maintained (Brandolini et al.,

2018). We found that both abandoned and cultivated, supposedly well-maintained, terraced slopes are involved with landslides: we attribute this fact to insufficient regulation of water runoff and bad preservation of the man-made embankments

**Table 4.** Rainfall events that have triggered – mostly shallow – landslides in the central sector of the Entella catchment, from November 2002 to September 2015.

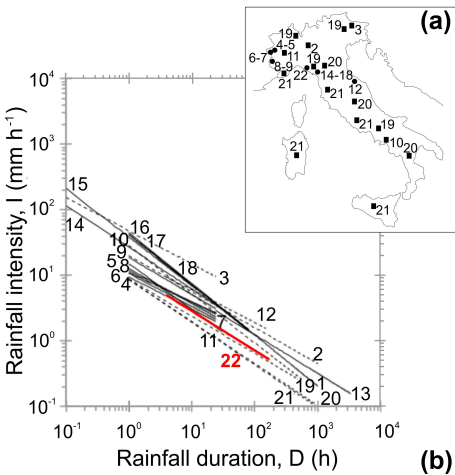
Date	Sites where event rainfall-induced landslides were most abundant
23–24 Nov 2002	Borzonasca, San Colombano Certenoli
31 Oct–1 Nov 2003	Borzonasca, San Colombano Certenoli
19–20 Feb 2006	Borzonasca
21–23 Nov 2007	Mezzanego
11–12 Nov 2008	Borzonasca
1 Dec 2008	Carasco
22–25 Dec 2009	Borzonasca, Carasco and Mezzanego
31 Oct–2 Nov 2010	Borzonasca, Mezzanego
23–24 Dec 2010	Mezzanego
8 Mar 2013	Mezzanego
21–22 Oct 2013	Borzonasca, Carasco, Leivi, Mezzanego, San Colombano Certenoli
26–27 Dec 2013	Borzonasca, Mezzanego
4 Jan 2014	Borzonasca, Mezzanego, San Colombano Certenoli
16–20 Jan 2014	Borzonasca, Carasco, Mezzanego
10–11 Oct 2014	Mezzanego
10–11 Nov 2014	Borzonasca, Carasco, Leivi, Mezzanego, San Colombano Certenoli
14 Sep 2015	Borzonasca, Carasco

**Table 5.** Comparison between spatial distribution of the landslides used to define the rainfall threshold and the land-use setting in the Entella River catchment.

Land-use category	Number of landslides
Urban fabric	13
Complex cropland	4
Olive groves	7
Abandoned olive groves	2
Vineyard	0
Agricultural land with natural vegetation	6
Forested areas	48
Natural grassland and/or high pastures	4
Transitional woodland/shrub	10

and dry-retaining stone walls that nowadays frequently characterized cultivated terraces, causing an increase in landslide susceptibility. Roads, trails, embankments and other man-made structures along the slope cause a general reduction in soil permeability and induce negative effects on the natural drainage system and stability, favoring the initiation of shallow landslides. This finding may be useful in catchment-scale landslide early warning systems, and for land planning aimed at reducing landslide risk in the study area.

We compared the new rainfall threshold obtained for the Entella catchment to similar ID empirical threshold curves (Table 7) proposed in the literature for mountain catchments, local areas or single regions in Italy (Fig. 9). In the range of validity for the threshold ( $4\text{ h} < D < 170\text{ h}$ ), the new threshold for the Entella catchment is lower to significantly lower



**Figure 9.** (a) Comparison between the ID threshold defined for the Entella catchment and threshold curves available in literature for regions, individual catchments and local areas in Italy (Table 6). Plot is in logarithmic coordinates. Dashed black lines show regional thresholds and continuous black lines show local thresholds. Red line (22) shows the rainfall threshold defined in this work for the Entella catchment. Sources: 1 – Cancelli and Nova (1985); 2 – Ceriani et al. (1994); 3 – Paronuzzi et al. (1998); 4–9 – Bolley and Oliaro (1999); 10 – Calcaterra et al. (2000); 11 – Marchi et al. (2002); 12 – Aleotti (2004); 13 – Floris et al. (2004); 14–15 – Gianecchini (2005); 16–18 – Gianecchini et al. (2012); 19–21 – Peruccacci et al. (2017). (b) Location map shows sites for which the threshold curves were defined: dots are threshold curves for individual catchments and local areas, squares are regional threshold curves.

**Table 6.** Results of the Pearson test for the correlation between MAP-normalized cumulated rainfall and the MAP-normalized antecedent rainfall, for periods of 3, 5, 15 and 30 days before the rainfall events that have resulted (*L*) and have not resulted (*R*) in landslides, for the Borzone (A), Panesi (B) and Pian dei Ratti (C) rain gauges. See Fig. 1 for location of the rain gauges.

		Test value, <i>r</i>			
		3-day	5-day	15-day	30-day
A	Rainfall events resulted in landslides	0.34	0.05	−0.15	−0.19
	Rainfall events	0.03	0.03	0.06	0.02
B	Rainfall events resulted in landslides	0.22	0.07	0.05	−0.03
	Rainfall events	0.05	0.09	0.21	0.12
C	Rainfall events resulted in landslides	−0.36	−0.33	−0.29	0.01
	Rainfall events	0.26	0.31	0.28	0.32

**Table 7.** Intensity–duration (ID) thresholds for the initiation of landslides in Italy. Rainfall intensity, *I* (mm h<sup>−1</sup>); rainfall duration, *D* (h). Geographical extent: R – regional; L – local; C – catchment. Area: area where the threshold was defined. Landslide type: A – all types; D – debris flow; S – soil slip; Sh – shallow landslides. Source: 1 – Cancelli and Nova (1985); 2 – Ceriani et al. (1994); 3 – Paronuzzi et al. (1998); 4–9 – Bolley and Olliaro (1999); 10 – Calcaterra et al. (2000); 11 – Marchi et al. (2002); 12 – Aleotti (2004); 13 – Floris et al. (2004); 14–15 – Giannecchini (2005); 16–18 – Giannecchini et al. (2012); 19–21 – Peruccacci et al. (2017).

No.	Extent	Area	Landslide type	Threshold curve	Duration range (h)
1	L	Valtellina, Lombardy	S	$I = 44.668D^{-0.78}$	1 : 1000
2	R	Lombardy	A	$I = 20.1D^{-0.55}$	1 : 1000
3	R	NE Alps	D	$I = 47.742D^{-0.507}$	0.1 : 24
4	C	Rho Basin, Susa Valley, Piedmont	D	$I = 9.521D^{-0.4955}$	1 : 24
5	C	Rho Basin, Susa Valley, Piedmont	D	$I = 11.698D^{-0.4783}$	1 : 24
6	C	Perilleux Basin, Piedmont	D	$I = 11.00D^{-0.4459}$	1 : 24
7	C	Perilleux Basin, Piedmont	D	$I = 10.67D^{-0.5043}$	1 : 24
8	C	Champeyron Basin, Piedmont	D	$I = 12.649D^{-0.5324}$	1 : 24
9	C	Champeyron Basin, Piedmont	D	$I = 18.675D^{-0.565}$	1 : 24
10	R	Campania	A	$I = 28.10D^{-0.74}$	1 : 600
11	C	Moscardo Torrent	A	$I = 15D^{-0.70}$	1 : 30
12	R	Piedmont	Sh	$I = 19D^{-0.50}$	4 : 150
13	C	Valzangona, Apennines	A	$I = 18.83D^{-0.59}$	24 : 3360
14	C	Apuane Alps, Tuscany	Sh	$I = 26.871D^{-0.638}$	0.1 : 35
15	C	Apuane Alps, Tuscany	Sh	$I = 38.363D^{-0.743}$	0.1 : 12
16	C	Middle Serchio Basin, Tuscany	Sh	$I = 43.48D^{-0.74}$	2 : 70
17	C	Middle Serchio Basin, Tuscany	Sh	$I = 43.25D^{-0.78}$	1.5 : 80
18	C	Middle Serchio Basin, Tuscany	Sh	$I = 41.39D^{-0.76}$	1 : 80
19	R	High MAP regions	A	$I = 8.9D^{-0.57}$	1 : 544
20	R	Apennine mountain system	A	$I = 8.6D^{-0.64}$	1 : 918
21	R	Csa climate regions	A	$I = 8.6D^{-0.65}$	1 : 1176

than other thresholds proposed for mountain catchments in Italy. It means that rainfall mean intensity required to trigger shallow landslides in the Entella basin are lower for the same rainfall durations than those expected in other Italian regions on the average. In particular, the threshold is lower than the curves proposed for (i) the Champeyron mountain catchments in the Susa Valley, Piedmont, northwestern Italy (Bolley and Olliaro, 1993), (ii) the Moscardo mountain catchment, Friuli, northeastern Italy (Marchi et al., 2002) and (iii) the Valzangona area, Marche, central Italy (Floris et al.,

2004); and it is significantly lower than the threshold curves proposed by Giannecchini (2005) for the Apuane Alps, and by Giannecchini et al. (2012) for the Serchio Basin, Tuscany. The obtained threshold is similar to the curves proposed by Bolley and Olliaro (1993) for the Rho and Perilleux mountain catchments, in Piedmont. The new threshold for the Entella catchment is also significantly lower than the local threshold proposed by Cancelli and Nova (1985) for the Valtellina valley, in the southern Italian Alps, and the regional thresholds proposed, for example by (i) Ceri-

ani et al. (1994) for the Lombardy region, northern Italy, (ii) Paronuzzi et al. (1998) for the northeastern Alps, (iii) Calcaterra et al. (2000) for the Campania region, southern Italy, and by (iv) Aleotti (2004) for the Piedmont region, northern Italy. The new threshold is instead higher than the regional thresholds proposed by Peruccacci et al. (2017) for physiographic, climatic and meteorological regions in Italy that are similar to the Entella River basin; and in particular, (i) the high mean annual precipitation region ( $1600 \text{ mm} < \text{MAP} < 2000 \text{ mm}$ ), (ii) the Apennines mountain province and (iii) the region characterized by a temperate climate with dry and hot summers (Csa, in the Köppen–Geiger climate classification system).

We attribute the result firstly to the high landslides susceptibility that characterize the study area due to the complex geological, geomorphological and land-use setting, the high-relief topography and the peculiar orographic and meteorological conditions of the region, with a high MAP and the frequent occurrence of convective thunderstorms and short-duration and high to very high intensity rainfall events, whose formation is favored by the local orographic setting. Secondly, we explain the low curve obtained with the possible disturbance in triggering landslides due to the presence of man-made structures at the source areas. However, comparison with other curves has to take into account the possible uncertainty due to different rainfall and landslide information analyzed, the different methods used to define the thresholds, or the different criteria adopted to identify the rainfall events and the consequent rainfall duration values. For example, some researchers use information from a few particularly severe meteorological events that triggered abundant and destructive landslides, such as for the Valtellina (Cancelli and Nova, 1985) or the NE Alps (Paronuzzi et al., 1998), with higher mean intensity values; others consider different type of landslides and involved material, such as debris flows for the Apuane Alps (Giannecchini et al., 2010), with larger rainfall amounts required to fail; some researchers use different criteria to define the rainfall event, i.e., duration and intensity value, such as for the Piedmont region (Aleotti, 2004).

As regards the comparison between MAP-normalized cumulated event rainfall and MAP-normalized antecedent rainfall, we conclude that antecedent rainfall conditions do not play a significant role in the initiation of landslides in the Entella catchment.

## 7 Conclusion

Between 2002 and 2016, numerous intense rainfall events hit the Entella River basin, in the Liguria Apennines. The intense to very intense rainfall events were produced by local thunderstorms, and caused abundant and widespread shallow landslides and earth flows, which have resulted in a total of

two fatalities and severe damage to public and private structures and the infrastructure.

Analysis of three particularly severe rainfall events occurred in the Entella catchment in the 15-year period investigated revealed that the rainfall-induced landslides triggered by the intense or very intense rainfall occurred primarily at the same time, or in a period from 1 to 6 h, from the maximum recorded peak rainfall intensity, at or near the geographical location where the measured rainfall intensity was highest. Using different sources of landslide and rainfall information, we identified 29 rainfall events that have resulted in landslides. Among these 29 events, we used rainfall and landslide information for 16 rainfall events for which the time and location of landslides were known with sufficient geographical and temporal accuracy to define a new rainfall intensity–duration (ID) threshold for the possible initiation of shallow landslides and earth flows in the Entella catchment. Adopting an accepted statistical approach (Brunetti et al., 2010; Peruccacci et al., 2012), we defined the empirical ID threshold corresponding to the 5 % exceeding probability, and the associated uncertainty. Comparison of the new rainfall threshold for the Entella catchment to empirical rainfall thresholds proposed in the literature for mountain catchments, local areas and single regions in Italy revealed that the new threshold is lower than most of the published thresholds, in the range  $4 \text{ h} < D < 170 \text{ h}$ . We attribute the result mainly to the geological, geomorphological, orographic and meteorological settings of the Entella catchment that highly increase the susceptibility to rainfall-induced shallow landslides, and secondarily to the human disturbance.

To evaluate the possible role of the antecedent rainfall conditions in the initiation of landslides in the Entella catchment, we compared the antecedent rainfall for different periods, from 3 to 30 days, with the cumulated event rainfall that have and have not resulted in landslides between 2002 and 2016 in the study area. The analysis revealed that significant correlations between the cumulated rainfall event and the antecedent rainfall do not exist. Based on this finding, we conclude that the antecedent rainfall conditions did not play a major role in the initiation of shallow landslides in the Entella catchment.

This study presents relevant scientific findings and useful prospects in land planning and landslide risk mitigation: the Entella catchment is the largest tyrrhenian basin in the middle-to-eastern sector of the Ligurian region – one of the Mediterranean areas with the highest MAP values (more than 4000 mm in 2014) – and it is affected by the low-pressure system called the “Genoa Low”, that results in very heavy, short-duration and local storms. After these severe rainfall events, widespread and damaging ground effects were observed, including rainfall-induced shallow landslides and flash floods. A recent study, still in progress, permitted us to identify 20 intense rainfall events that resulted in severe ground effects during the period 2001–2017 for each of the catchments of the two tributaries, Sturla and Graveglia: 50 %



of the events affect both the subcatchments, testifying to the extremely localized extent of these phenomena.

In order to predict the possible occurrence of surface landslides induced by rainfall, a project for a forecasting and early warning system based on regional rainfall thresholds is under construction by the Ligurian Regional Agency for the Environment Protection (ARPA). The authors hope that the approach adopted, and the results obtained in the Entella catchment, will be useful for the implementation of an early warning system, based on precipitation or forecast measurements, not only at regional scale, but also at level of both major basins and single subbasins. This consideration arises from the punctual surveys carried out by the authors, which detected that in a particular area, during the same thunderstorm, many shallow landslides were triggered, while no phenomena were activated in the nearby area. The violent storms, in fact, often have diameters shorter than 1 km.

Using this method, further rainfall thresholds may be defined for different exceedance probability levels, in order to identify the correspondent rainfall conditions needed to initiate slope failures. Since instability phenomena involve both naturally vegetated and agricultural terraced slopes (cultivated and abandoned) and are frequently affected by human disturbance, we highlight the importance of improving land planning and also providing a long-term strategy in order to reduce rainfall-induced landslide risk in the study area, including restoration of abandoned terraces, recovery of the drainage system, maintenance and management of the wooded surfaces, and rigorous monitoring of urbanization.

We further expect that the approach adopted to define new threshold curves for possible rainfall-induced landslides tested in this work, and its implementation in a early warning system, can be used in other mountain catchments, in Italy and elsewhere.

**Data availability.** Rainfall data are available at the following URL: <http://www.cartografiar.liguria.it/SiraQualMeteo/script/PubAccessoDatiMeteo.asp> (Ligurian Region, 2018).

**Author contributions.** Each author has made substantial contributions to the work: AR and FF contributed to the conception of the work; AR and FG contributed to the methodology applied; AR and FF contributed to acquisition, formal analysis, investigation, data curation and writing the original draft preparation of the paper; FL, LT and FG contributed to the validation of the work; FL and FG contributed to the writing as well as review and editing of the paper; LT contributed to the visualization; FG contributed to the supervision of the work; FL and LT contributed to the resources, project administration and funding acquisition. Each author has approved the submitted version and agrees to be personally accountable for the author's own contributions and for ensuring that questions related to the accuracy or integrity of any part of the work, even ones in which the author was not personally involved, are appropriately investigated, resolved, and documented in the literature.

**Competing interests.** The authors declare that they have no conflict of interest.

Edited by: Thomas Glade

Reviewed by: two anonymous referees

## References

- Aleotti, P.: A warning system for rainfall-induced shallow failures, *Eng. Geol.*, 73, 247–265, <https://doi.org/10.1016/j.enggeo.2004.01.007>, 2004.
- Alpert, P., Ben-Gai, T., Baharad, A., Benjamin, Y., Yekutieli, D., Colacino, M., Diodato, L., Ramis, C., Homar, V., Romero, R., Michaelides, S., and Manes, A.: The paradoxical increase of Mediterranean extreme daily rainfall in spite of decrease in total value, *Gephys. Res. Lett.*, 29, 1536, <https://doi.org/10.1029/2001gl013554>, 2002.
- Anagnostopoulou, Chr., Tolika, K., Flocas, H., and Maheras, P.: Cyclones in the Mediterranean region: present and future climate scenarios derived from a general circulation model (HadAM3P), *Adv. Geosci.*, 7, 9–14, <https://doi.org/10.5194/adgeo-7-9-2006>, 2006.
- ARPAL-CMIRL – Agenzia Regionale per la Protezione dell'Ambiente Ligure – Centro Funzionale Meteo-idrologico di Protezione Civile della Regione Liguria: Rapporto di Evento Meteoidrologico del 20–21 ottobre 2013, available at: [https://www.arpal.gov.it/contenuti\\_statici/pubblicazioni/rapporti\\_eventi/2013/REM\\_20131021\\_temporali-Carasco\\_vers20131217.pdf](https://www.arpal.gov.it/contenuti_statici/pubblicazioni/rapporti_eventi/2013/REM_20131021_temporali-Carasco_vers20131217.pdf) (last access: 6 September 2018), 2013.
- ARPAL-CMIRL – Agenzia Regionale per la Protezione dell'Ambiente Ligure – Centro Funzionale Meteo-idrologico di Protezione Civile della Regione Liguria: Rapporto di Evento Meteoidrologico del 9–13 November 2014, available at: [http://www.arpal.gov.it/contenuti\\_statici/pubblicazioni/rapporti\\_eventi/2014/REM\\_20141109-13\\_alluvione\\_Tigullio\\_vers20150123.pdf](http://www.arpal.gov.it/contenuti_statici/pubblicazioni/rapporti_eventi/2014/REM_20141109-13_alluvione_Tigullio_vers20150123.pdf) (last access: 6 September 2018), 2015.
- Bartolini, G., Grifoni, G., Torrigiani Malaspina, T., Vallorani, R., Meneguzzo, F., and Gozzini, B.: Precipitation changes from two long-term hourly dataset in Tuscany (Italy), *Int. J. Climatol.*, 34, 3977–3985, <https://doi.org/10.1002/joc.3956>, 2014.
- Baum, R. L. and Godt, J. W.: Early warning of rainfall-induced shallow landslides and debris flows in the Usa, *Landslides*, 7, 259–272, <https://doi.org/10.1007/s10346-010-0204-1>, 2010.
- Bolley, S. and Oliaro, P.: Analisi dei debris flows in alcuni bacini campione dell'Alta Val Susa, *Geingegneria Ambientale e Mineraria*, March, 69–74, 1993.
- Brand, E. W., Premchitt, J., and Phillipson, H. B.: Relationship between rainfall and landslides in Hong Kong, in: *Proc. 4th Int. Symp. Landslides*, Toronto, 377–384, 1984.
- Brandolini, P., Cevasco, A., Firpo, M., Robbiano, A., and Sacchini, A.: Geo-hydrological risk management for civil protection purposes in the urban area of Genoa (Liguria, NW Italy), *Nat. Hazards Earth Syst. Sci.*, 12, 943–959, <https://doi.org/10.5194/nhess-12-943-2012>, 2012.
- Brandolini, P., Pepe, G., Capolongo, D., Cappadonia, C., Cevasco, A., Conoscenti, C., Marsico, A., Vergari, F., and Del Monte, M.: Hillslope degradation in representative Italian areas: just soil ero-

- sion risk or opportunity for development?, *Land Degrad. Dev.*, <https://doi.org/10.1002/ldr.2999>, in press, 2018.
- Brunetti, M. T., Peruccacci, S., Rossi, M., Luciani, S., Valigi, D., and Guzzetti F.: Rainfall thresholds for the possible occurrence of landslides in Italy, *Nat. Hazard Earth Syst. Sci.*, 10, 447–458, <https://doi.org/10.5194/nhess-10-447-2010>, 2010.
- Caine, N.: The rainfall intensity duration control of shallow landslides and debris flows, *Geogr. Ann.*, 62, 23–27, <https://doi.org/10.2307/520449>, 1980.
- Calcaterra, D., Parise, M., Mauro, B., and Pelella, L.: The influence of meteoric events in triggering shallow landslides in pyroclastic deposits of Campania, Italy, in: *Proceedings of the 8th International Symposium on Landslides*, edited by: Bromhead, E., Dixon, N., and Ibsen, M. L., A. A. Balkema, Cardiff, 209–214, 2000.
- Campbell, R. H.: Soil slip, debris flows, and rainstorms in the Santa Monica Mountains and vicinity. Southern California, US Geological Survey Prof. Paper 851, US Geological Survey, Washington, 51 pp., 1975.
- Cancelli, A. and Nova, R.: Landslide in soil debris cover triggered by rainstorm in Valtellina (Central Alps, Italy), in: *Proceedings of the IV International Conference and Field Workshop on Landslides*, September 1985, Tokio, 267–272, 1985.
- Cannon, S. H. and Ellen, S. D.: Rainfall conditions for abundant debris avalanches, San Francisco Bay region, California, *Calif. Geol.*, 38, 267–272, 1985.
- Ceriani, M., Lauzi, S., and Padovan, N.: Rainfall thresholds triggering debris flows in the alpine area of Lombardia Region, central Alps, in: *Man and Mountain '94 Proceedings*, Ponte di Legno, 123–139, 1994.
- Cevasco, A., Diodato, N., Revellino, P., Fiorillo, F., Grelle, G., and Guadagno, F. M.: Storminess and geo-hydrological events affecting small coastal basins in a terraced Mediterranean environment, *Sci. Total Environ.*, 532, 208–219, <https://doi.org/10.1016/j.scitotenv.2015.06.017>, 2015.
- Cevasco, A., Pepe, G., D'Amato Avanzi, G., and Giannecchini, R.: Preliminary analysis of the November 10, 2014 rainstorm and related landslides in the lower Lavagna Valley (Eastern Liguria), *Ital. J. Eng. Geol. Environ.*, 1, 5–15, <https://doi.org/10.4408/IJEGE.2017-01.S-01>, 2017.
- CNR IRPI – Istituto di Ricerca per la Protezione Idrogeologica – Consiglio Nazionale delle Ricerche: Provincia di Genova: Eventi alluvionali del novembre 2014, Area di Chiavari, Rilevamento LiDAR e analisi dei ottenuti, Pubblicazione del 27 febbraio 2015, available at: <http://gmg.irpi.cnr.it> (last access: 6 September 2018), 2015.
- Crosta, G.: Rainfall threshold Professional: an aid for landslide susceptibility zonation, *Environ. Geol.*, 35, 131–145, 1998.
- Crosta, G. B. and Frattini, P.: Distributed modelling of shallow landslides triggered by intense rainfall, *Nat. Hazards Earth Syst. Sci.*, 3, 81–93, <https://doi.org/10.5194/nhess-3-81-2003>, 2003.
- Crosta, G. B., Dal Negro, P., and Frattini, P.: Soil slips and debris flows on terraced slopes, *Nat. Hazards Earth Syst. Sci.*, 3, 31–42, <https://doi.org/10.5194/nhess-3-31-2003>, 2003.
- Crozier, M. J.: *Landslides: causes, consequences and environment*, Croom Helm, London, 252 pp., 1986.
- Crozier, M. J.: The climatic–landslide couple: a Southern Hemisphere perspective, in: *Rapid mass movement as a source of climatic evidence for the Holocene*, edited by: Matthews, J. A., Brunsden, D., Frenzel, B., Glaser, B., and Weiß, M. M., *Palaeoclim. Res.*, 19, 333–354, 1997.
- D'Amato Avanzi, G., Giannecchini, R., and Puccinelli, A.: The influence of the geological and geomorphological settings on shallow landslides. An example in a temperate climate environment: The June 19, 1996 event in north-western Tuscany (Italy), *Eng. Geol.*, 73, 215–228, <https://doi.org/10.1016/j.enggeo.2004.01.005>, 2004.
- D'Amato Avanzi, G., Giannecchini, R., and Puccinelli, A.: Fragility territory and infrastructures resulting from rainstorms in Northern Tuscany (Italy), in: *Proceedings of the 2nd World Landslides Forum*, 3–9 October 2011, Roma, Springer-Verlag, [https://doi.org/10.1007/978-3-642-31319-6\\_33](https://doi.org/10.1007/978-3-642-31319-6_33), 2012.
- D'Amato Avanzi, G., Galanti, Y., Giannecchini, R., and Bartelletti, C.: Shallow landslides triggered by the 25 October 2011 extreme rainfall in Eastern Liguria (Italy), in: *Engineering Geology for Society and Territory*, Vol. 2, edited by: Lollino, G., Giordan, D., Crosta, G. B., Corominas, J., Azzam, R., Wasowski, J., and Sciarra, N., Springer International Publishing, Switzerland, 515–519, [https://doi.org/10.1007/978-3-319-09057-3\\_85](https://doi.org/10.1007/978-3-319-09057-3_85), 2015.
- Del Ventisette, C., Garfagnoli, F., Ciampalini, A., Battistini, A., Gigli, G., Moretti, S., and Casagli, N.: An integrated approach to the study of catastrophic debris-flows: geological hazard and human influence, *Nat. Hazards Earth Syst. Sci.*, 12, 2907–2922, <https://doi.org/10.5194/nhess-12-2907-2012>, 2012.
- Faccini, F., Brandolini, P., Robbiano, A., Perasso, L., and Sola, A.: Fenomeni di dissesto e precipitazioni in rapporto alla pianificazione territoriale: l'evento alluvionale del novembre 2002 nella bassa Val Lavagna (Liguria Orientale), *Geogr. Fis. Dinam. Quat.*, suppl. VII, 145–153, 2005.
- Faccini, F., Giostrella, P., Lazzeri, R., Melillo, M., Raso, M., and Roccati, A.: The 10<sup>th</sup> November 2014 flash-flood event in Chiavari City (Eastern Liguria, Italy), *Rend. Online Soc. Geol. It.*, 35, 124–127, <https://doi.org/10.3301/rol.2015.80>, 2015a.
- Faccini, F., Luino, F., Sacchini, A., and Turconi, L.: The 4<sup>th</sup> October 2010 flash flood event in Genoa Sestri Ponente (Liguria, Italy), *Disaster Advanced*, 8, 1–14, 2015b.
- Faccini, F., Luino, F., Sacchini, A., Turconi, L., and De Graff, J.: Geo-hydrological hazard and urban development in the Mediterranean area: an example from Genoa city (Italy), *Nat. Hazards Earth Syst. Sci.*, 15, 2631–2652, <https://doi.org/10.5194/nhess-15-2631-2015>, 2015c.
- Faccini, F., Piana, P., Sacchini, A., Lazzeri, R., Paliaga, G., and Luino, F.: Assessment of heavy rainfall triggered flash floods and landslides in the Sturla stream basin (Ligurian Apennines, northwestern Italy), *Jokull*, 67, 44–74, 2017.
- Floris, M., Mari, M., Romeo, R. W., and Gori, U.: Modelling of landslides-triggering factors – A case study in the Northern Apennines, Italy, in: *Notes in Earth Sciences 104, Engineering Geology for Infrastructure Planning in Europa*, edited by: Hack, R., Azzam, R., and Chaliar, R., Springer-Verlag, Berlin, Heidelberg, 745–753, 2004.
- Geological Service of Italy – Servizio Geologico d'Italia: *Carta Geologica d'Italia in scala 1 : 100.000 – Foglio 83 “Rapallo”*, 2nd Edn., Serv. Geol. It., Roma, 1968.
- Giannecchini, R.: Rainfall triggering soil slips in the southern Apuane Alps (Tuscany, Italy), *Adv. Geosci.*, 2, 21–24, <https://doi.org/10.5194/adgeo-2-21-2005>, 2005.

- Giannecchini, R.: Relationship between rainfall and shallow landslides in the southern Apuan Alps (Italy), *Nat. Hazards Earth Syst. Sci.*, 6, 357–364, <https://doi.org/10.5194/nhess-6-357-2006>, 2006.
- Giannecchini, R., Damilano, D., and Puccinelli, A.: Critical rainfall thresholds for triggering rapid shallow landslides in the Eastern Ligurian Riviera (Italy), in: *Proceedings of 85th Italian Geological Society National Congress*, 6–8 September 2010, Pisa, Italy, 596–597, 2010.
- Giannecchini, R., Galanti, Y., and D’Amato Avanzi, G.: Critical rainfall thresholds for triggering shallow landslides in the Serchio River Valley (Tuscany, Italy), *Nat. Hazards Earth Syst. Sci.*, 12, 829–842, <https://doi.org/10.5194/nhess-12-829-2012>, 2012.
- Giannecchini, R., Galanti, Y., and Barsanti, M.: Rainfall intensity-duration thresholds for triggering shallow landslides in the Eastern Ligurian Riviera (Italy), in: *Engineering Geology for Society and Territory*, Vol. 2, edited by: Lollino, G., Giordan, D., Crosta, G. B., Corominas, J., Azzam, R., Wasowski, J., and Sciarra, N., Springer International Publishing, Switzerland, 1581–1584, [https://doi.org/10.1007/978-3-319-09057-3\\_281](https://doi.org/10.1007/978-3-319-09057-3_281), 2015.
- Glade, T.: The Temporal and Spatial Occurrence of Rainstorm-triggered Landslide Events in New Zealand, PhD Thesis, School of Earth Science, Wellington, 380 pp., 1997.
- Govi, M. and Sorzana, P. F.: Landslide susceptibility as a function of critical rainfall amount in Piedmont basin (Northwestern Italy), *Studia Geomorph. Carpatho-Balcanica*, Krakow, 14, 43–61, 1980.
- Govi, M., Mortara, G., and Sorzana, P. F.: Eventi idrologici e frane, *Geologia Applicata & Ingegneria*, Bari, Italy, 20, 359–375, 1985.
- Guzzetti, F.: Landslides fatalities and the evaluation of landslide risk in Italy, *Eng. Geol.*, 59, 89–107, [https://doi.org/10.1016/S0013-7952\(00\)00047-8](https://doi.org/10.1016/S0013-7952(00)00047-8), 2000.
- Guzzetti, F., Cardinali, M., Reichenbach, P., Cipolla, F., Sebastiani, C., Galli, M., and Salvati, P.: Landslides triggered by the 23 November 2002 rainfall event in the Imperia Province, Western Liguria, Italy, *Eng. Geol.*, 73, 229–245, <https://doi.org/10.1016/j.enggeo.2004.01.006>, 2004.
- Guzzetti, F., Peruccacci, S., Rossi, M., and Stark, C. P.: Rainfall thresholds for the initiation of landslides in central and southern Europe, *Meteorol. Atmos. Phys.*, 98, 239–267, <https://doi.org/10.1007/s00703-007-0262-7>, 2007.
- Guzzetti, F., Peruccacci, S., Rossi, M., and Stark, C. P.: Rainfall intensity-duration control of landslides and debris flows: an update, *Landslides*, 5, 3–17, <https://doi.org/10.1007/s10346-007-0112-1>, 2008.
- Hungr, O., Evans, S. G., Bovis, M. J., and Hutchinson, J. N.: A review of the classification of landslides of the flow type, *Environ. Eng. Geosci.*, 7, 221–238, <https://doi.org/10.2113/gseegeosci.7.3.221>, 2001.
- Hungr, O., Leroueil, S., and Picarelli, L.: The Varnes classification of landslide types, an update, *Landslides*, 11, 167–194, <https://doi.org/10.1007/s10346-013-0436-y>, 2014.
- Inverson, R. M.: Landslide triggering by rain infiltration, *Water Resour. Res.*, 36, 1897–1910, <https://doi.org/10.1029/2000wr900090>, 2000.
- Kim, S. K.: Prediction of rainfall triggered landslides in Korea, *Landslides*, 2, 989–994, 1991.
- Liguria Region: Carta uso e copertura del suolo (COR.IN.E) scala 1 : 100.000, available at: <http://www.cartografia.regione.liguria.it> (last access: 6 September 2018), 2000.
- Liguria Region: Carta geologica regionale (CGR) scala 1 : 25.000 – tav. 231.1, 231.4 – Chiavari-Recco, available at: <http://www.cartografia.regione.liguria.it> (last access: 6 September 2018), 2005.
- Ligurian Region: Regional database of rainfall data, available at: <http://www.cartografiarl.regione.liguria.it/SiraQualMeteo/script/PubAccessoDatiMeteo.asp>, last access: 9 September 2018.
- Luino, F.: Sequence of instability processes triggered by heavy rainfall in the northern Italy, *Geomorphology*, 66, 13–39, <https://doi.org/10.1016/j.geomorph.2004.09.010>, 2005.
- Marchi, L., Arattano, M., and Deganutti, A. M.: Ten years of debris flow monitoring in the Moscardo Torrent (Italian Alps), *Geomorphology*, 46, 1–17, [https://doi.org/10.1016/S0169-555X\(01\)00162-3](https://doi.org/10.1016/S0169-555X(01)00162-3), 2002.
- Marini, M.: L’Unità del M. Gottero fra la Val Trebbia e Sestri Levante (Appennino ligure): nuovi dati di analisi di bacino e ipotesi di evoluzione sedimentaria, *Boll. Soc. Geol. It.*, Roma, 3–23, 1992.
- Martelloni, G., Segoni, S., Fanti, R., and Catani, F.: Rainfall thresholds for the forecasting of landslide occurrence at regional scale, *Landslides*, 9, 485–495, <https://doi.org/10.1007/s10346-011-0308-2>, 2012.
- Mathew, J., Babu, D. G., Kundu, S., Vinod Kuma, K., and Pant, C. C.: Integrating intensity-duration-based rainfall threshold and antecedent rainfall-based probability estimate towards generating early warning system for rainfall-induced landslides in parts of the Garhwal Himalaya, India, *Landslides*, 11, 575–588, <https://doi.org/10.1007/s10346-013-0408-2>, 2014.
- Montgomery, D. R. and Dietrich, W. E.: A physically based model for the topographic control of shallow landsliding, *Water Resour. Res.*, 30, 1153–1171, 1994.
- Moser, M. and Hohensinn, F.: Geotechnical aspects of soil slips in Alpine regions, *Eng. Geol.*, 19, 185–211, [https://doi.org/10.1016/0013-7952\(83\)90003-0](https://doi.org/10.1016/0013-7952(83)90003-0), 1982/1983.
- Palladino, M. R., Viero, A., Turconi, L., Brunetti, M. T., Peruccacci, S., Melillo, M., Luino, F., Deganutti, A. M., and Guzzetti, F.: Rainfall thresholds for the activation of shallow landslides in the Italian Alps: the role of environmental conditioning factors, in: *Geomorphology*, Elsevier, Oxford, <https://doi.org/10.1016/j.geomorph.2017.11.009>, 2017.
- Paronuzzi, P., Cocolo, A., and Garlatti, G.: Eventi meteorici critici e debris flows nei bacini montani del Friuli, *L’Acqua*, Sez. I/Mem., 39–50, 1998.
- Peruccacci, S., Brunetti, M. T., Luciani, S., Vennari, C., and Guzzetti, F.: Lithological and seasonal control on rainfall thresholds for the possible initiation of landslides in central Italy, *Geomorphology*, 139–140, 79–90, <https://doi.org/10.1016/j.geomorph.2011.10.005>, 2012.
- Peruccacci, S., Brunetti, M. T., Gariano, S. L., Melillo, M., Rossi, M., and Guzzetti, F.: Rainfall thresholds for possible landslide occurrence in Italy, *Geomorphology*, 290, 39–57, <https://doi.org/10.1016/j.geomorph.2017.03.031>, 2017.
- Premchitt, J., Brand, E. W., and Chen, P. Y. M.: Rain induced landslides in Hong Kong, 1972–1992, *Asia Engineer.*, Hong Kong, 43–51, 1994.

- Reid, L. M. and Page, M. J.: Magnitude and frequency of landsliding in a large New Zealand catchment, *Geomorphology*, 49, 71–88, [https://doi.org/10.1016/S0169-555X\(02\)00164-2](https://doi.org/10.1016/S0169-555X(02)00164-2), 1993.
- Sacchini, A., Ferraris, F., Faccini, F., and Firpo, M.: Environmental climatic maps of Liguria, *J. Maps*, 8., 199–207, <https://doi.org/10.1080/17445647.2012.703901>, 2012.
- Saito, H., Nakayama, D., and Matsuyama, H.: Relationship between the initiation of a shallow landslide and rainfall intensity-duration thresholds in Japan, *Geomorphology*, 118, 167–175, <https://doi.org/10.1016/j.geomorph.2009.12.016>, 2010.
- Salvati, P., Bianchi, C., Rossi, M., and Guzzetti, F.: Societal landslide and flood risk in Italy, *Nat. Hazards Earth Syst. Sci.*, 10, 465–483, <https://doi.org/10.5194/nhess-10-465-2010>, 2010.
- Segoni, S., Leoni, L., Benedetti, A. I., Catani, F., Righini, G., Falorni, G., Gabellani, S., Rudari, R., Silvestro, F., and Rebora, N.: Towards a definition of a real-time forecasting network for rainfall induced shallow landslide, *Nat. Hazards Earth Syst. Sci.*, 9, 2119–2133, <https://doi.org/10.5194/nhess-9-2119-2009>, 2009.
- Silvestro, F., Gabellani, S., Giannoni, F., Parodi, A., Rebora, N., Rudari, R., and Siccardi, F.: A hydrological analysis of the 4 November 2011 event in Genoa, *Nat. Hazards Earth Syst. Sci.*, 12, 2743–2752, <https://doi.org/10.5194/nhess-12-2743-2012>, 2012.
- Silvestro, F., Rebora, N., Giannoni, F., Cavallo, A., and Ferraris, L.: The flash flood of the Bisagno Creek on 9<sup>th</sup> October 2014: an “unfortunate” combination of spatial and temporal scales, *J. Hydrol.*, 541, 50–62, <https://doi.org/10.1016/j.jhydrol.2015.08.004>, 2016.
- Tiranti, D. and Rabuffetti, D.: Estimation of rainfall thresholds triggering shallow landslides for an operational warning system implementation, *Landslides*, 7, 471–481, <https://doi.org/10.1007/s10346-010-0198-8>, 2010.
- Trigila, A., Iadanza, C., Bussettini, M., and Lastoria, B.: Dissesto idrogeologico in Italia: pericolosità e indicatori di rischio, Rapporti 287/2018, Istituto Superiore per la Protezione e la Ricerca Ambientale (ISPRA), Rome, 159 pp., 2018.
- Wasowski, J.: Understanding rainfall-landslide relationship in man-modified environment: a case history from Caramanico Terme (Italy), *Environ. Geol.*, 35, 197–209, <https://doi.org/10.1007/s002540050306>, 1998.
- Wieczorek, G. F.: Effects of rainfall intensity and duration on debris flows in central Santa Cruz Mountains, California, in: *Debris flows/avalanches: Process, Recognition and Mitigation, Reviews in Engineering Geology*, edited by: Costa, J. E. and Wieczorek, G. F., Geological Society of America, Boulder, CO, 93–104, 1987.
- Wieczorek, G. F.: Landslide triggering mechanism, in: *Landslides investigation and mitigation, special report*, edited by: Turner, A. K. and Schuster, R. L., Transportation Research Board, National Academy Press, Washington, 76–89, 1996.
- Wieczorek, G. F. and Sarmiento, J.: Significance of storm intensity-duration for triggering debris-flows near La Honda, California, in: *Abstracts with Programs No. 15*, Geological Society of America, Boulder, CO, 5 pp., 1983.
- Wilson, R. C. and Wieczorek, G. F.: Rainfall thresholds for the initiation of debris flow at La Honda, California, *Environ. Eng. Geosci.*, 1, 11–27, 1995.